



无菌由任

Aseptic Union series

国家高新技术企业 浙江省著名商标
www.cndonjoy.com



东正一直致力于技术进步，是您值得信赖的事业伙伴！
Donjoy committing to major technological advances, is your reliable business partner!

0.1	自控调节阀+控制器 Automatic control regulating valve +Control head
0.2	生物制药隔膜阀 Biopharmaceutical diaphragm valve
0.3	高洁净泵 High purity pumps
0.4	防混蝶阀+蝶阀 Mixing proof butterfly valve +Butterfly valve
0.5	球阀 Ball valve
0.6	截止换向阀+防混阀+罐底阀 Divert seat valve+Mixing proof valve +Tank bottom valve
0.7	角座阀+截止阀 Angle seat valve+Globe valve
0.8	止回阀+恒压阀+安全阀+减压阀 Check valve+constant pressure valve+safety valve +air release valve
0.9	清洁技术+取样阀+视镜+照明技术 Clean technology+sample valve+sight glass +lighting technology
0.10	过滤器+人孔 Filter+man hole cover(manway)
0.11	卫生管件 Sanitary fittings ASME BPE DIN11852 Bs4825 SMS ISO IDF 3A



注意：
目录技术资料仅供设计参考，
设计更新和技术升级恕不另行通知！

东正始终坚持以不断革新的技术、日新月异的市场发展和客户需求是当今我们面临的巨大挑战。面对这些挑战我们信心十足，因为东正高度专业化的产品和技术创新，是我们未来将以更高、更优的产品来满足不断增长的市场需求。

Technological innovation, rapid development of the market and customer needs are the greatest challenges facing us today. Facing with these challenges we are confident, because of highly professional products and technological innovation, we will meet the growing demand of market and customer with our better and better products.

法律声明：
目录样册版本属东正所有，如有抄袭东正将追究其法律责任和经济赔偿。东正已获得国家版权局书刊号。
东正众多技术设计，都具有专利保护，如有抄袭，东正必将追究法律责任和经济赔偿。

领先源于创新 创新源于专业
东正的专业与品质的邂逅源于创新的精神



现代化工厂已经投产，期待您的光临！
温州空港经济园区生产基地
Wenzhou airport economic zone production base

占地面积29000m²，总投资1.2亿元，新引进工业机器人、5轴加工中心、机器人抛光设备。

Covering an area of 29000 m², with total investment after construction is expected to 120 million yuan, introduces new industrial robot, five axis machining center, machine Polishing equipment.

东正创立于1993年，注册资金5508万，是一家专注于研发高品质PID过程控制器、阀门定位器、流量控制器，阀门控制单元，高洁净过程控制阀、智能自控阀，高洁净泵、高洁净管材和管道配件。公司高度专业化的产品和技术专注于生物制药、食品饮料、酿酒、精细化工等工业领域。东正众多的创新解决方案，对满足全球，尤其是新兴市场不断增长生物制药和食品饮料行业的需求起到了积极作用。

东正制造的产品母材料、加工技术、焊接技术、表面处理等技术指标均已达到国内外先进水平。且符合ASME BPE、EHEDG、FDA、3A等一系列国际标准和规范要求，先后通过了由德国TÜV机构实施的欧盟承压设备指令(PED-97/23/EC)和(MD-06/42/EC)认证、美国3A机构实施的3-A卫生标准认证、中国安全阀特种制造设备(TS)许可证和中国质量认证中心CQC ISO9001:2008质量管理体系认证等多项国际权威认证。

东正凭借先进的技术、优异的品质和完善的售后服务体系，先后被评定为国家高新技术企业，省著名商标、省科技型企业、创新型企业、专利示范企业、研发中心企业，守合同重信用AAA企业等众多荣誉。



关于东正 About DONJOY

Donjoy was built up in 1993, with registered capital RMB 55.08 millions. We focus on developing high quality PID process controller, the valve positioner, the flow controller, the valve control unit, high purity process control valve, intelligent self-control valve, high purity pump, high purity tubing fitting and pipeline accessories. Donjoy's products and technologies are widely used in biopharmaceutical, food, drink, wine fine chemicals and other industrial fields. Donjoy's innovation solutions meet the growing demand of the industry of biopharmaceutical, food and beverage from the whole world, especially the emerging market.

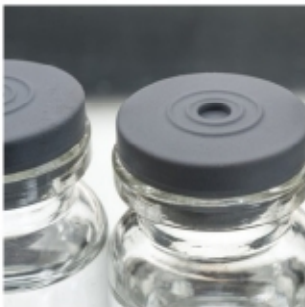
Raw material, processing technology, welding technology, surface treatment from Donjoy have achieved advanced levels of domestic and foreign market. Donjoy productions according to ASME BPE, EHEDG, FDA and 3A standard, get certificate of PED-97/23/EC and MD-06/42/EC issued by TUV, 3A issued by 3A organization, TS licence and ISO9001:2008.

Donjoy with advanced technology, excellent quality and perfect after-sales service system, has been assessed as the national high-tech enterprises, the Provincial Famous Trademark, the Provincial Science and Technology Enterprises, Innovative Enterprises, Patent Model Enterprises, R & D Center, AAA Credit Enterprises.



创立于2005年现代化工厂
温州滨海经济开发区生产基地
Wenzhou binhai economic development zone production base

DONJOY high-purity valve, pump, control system, pipe and accessories, provide the most excellent solution for various business scopes.



Biopharmaceutical



Dairy



Food



Beverage



Water Processing



Brewing



Fine Chemical

制造与检验 Manufacturing and testing



机器人生产线 Robot production line

全自动弯管设备 Automatic pipe bending equipment

DONJOY以科学技术是第一生产力，也是企业核心竞争力，只有不断投入核心技术研发和创新，不断追求卓越，精益求精、以先进生产设备，严格的质量管理体系，精密的生产检测流程，保证每一款产品优良的性能。

Science and technology constitute a primary productive force, also the core competitive strength of the enterprise. Continuously intensifying the research, development and innovation of core technology, pursuing prominence and keeping improving, ensuring the excellent quality and performance of every single product by advanced production equipment, strict quality control and precise production and inspection procedures.



至精 至洁 历久弥新

20多年的经验是您值得信赖的品牌-DONJOY

东正管件系列产品已全部通过美国-3A-63-03认证；橡胶垫圈FDA 177.2600，PTFE垫圈FDA177.1550。

材质：304、316L、1.4301、1.4404、1.4435 NB2 Fe<0.5%

表面处理：机抛光 DIN 11866 HE3c HE4c HE5c, ASME BPE SFF1 SFF2 SFF3

电抛光 DIN 11866 HE3c HE4c HE5c, ASME BPE SFF4 SFF5 SFF6



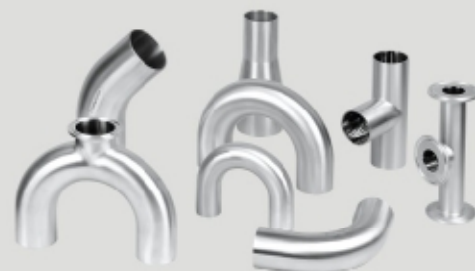
异形管件系列
(定制品)



卡箍式管件
Clamp pipe fittings



管件系列
DIN SMS ISO
BS4825 3A



无菌系列-
由任-法兰-卡箍由任
Aseptic series-Union-
Flange-Clamp union

BPE管件
BPE pipe fitting



由任
Union



管支架
Pipe holder



I-Line管件系列
I-line fittings



斜座式密封3A由任
Bevel seal ferrules



卫生钢管
Tube



材质和连接标准

Material and connectivity standards

材质有多种选项

- ◆ 1.4435–BN2 (316L) Fe < 0.5% Forged
- ◆ ASME BPE 316L
- ◆ ASTM 304, 1.4301
- ◆ ASTM 316L 1.4404

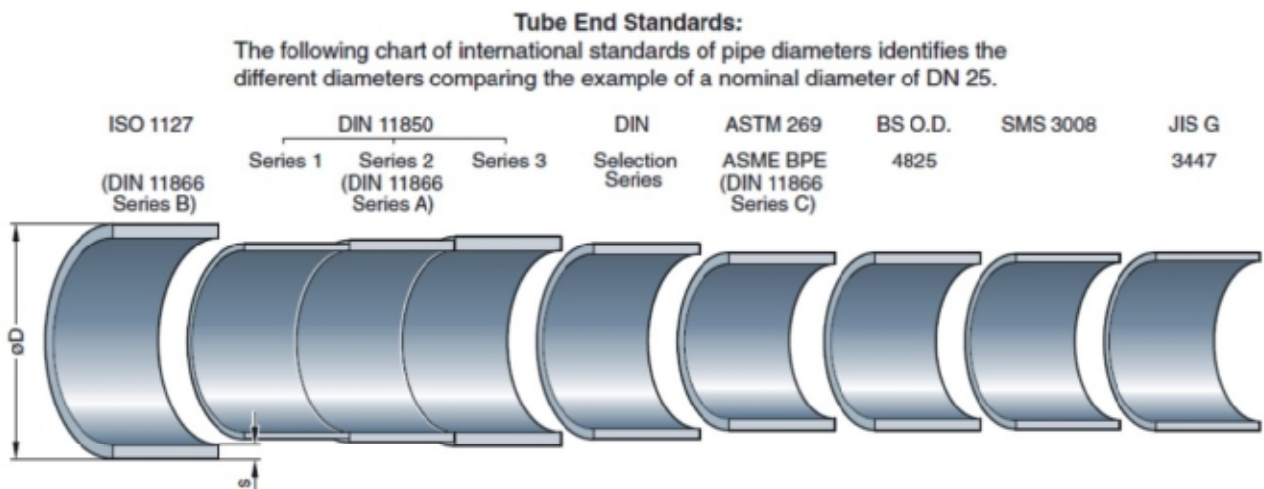
不锈钢化学成分规范
Chemical composition for automatic weld ends, %

根据ASDME BPE Table DT-3		EN 10088-3 1.4435 NB2 Fe≤0.5%	
Carbon, max	0.035	Carbon, max	< 0.03
chromium	16.00–18.00	chromium	16.00–18.00
manganese, max	2.00	manganese, max	2.00
molybdenum	2.00–3.00	molybdenum	2.5–3.0
nickel	10.00–15.00	nickel	12.5–14.0
phosphorus, max	0.045	phosphorus, max	0.045
silicon, max	1.00	silicon, max	1.00
sulfur	0.005–0.017	sulfur	≤0.030
		nitrogen	< 0.11

管道接口标准 Pipeline end standard

下表格：以DN25为列的不同国际标准卫生级不锈钢管道直径的区别

Next form: Take DN25 for example to illustrate the stainless steel pipe OD difference in different International standard health grade



表面处理

Surface treatment

表面处理 Surface treatment

对高洁净的工艺管路系统来说，表面的粗糙度是极其重要的技术指标
For high clean process piping system, the roughness of the surface is an extremely important technique index



Surface finish: machined,
Ra 1.2 μm



Surface finish: machined,
Ra 0.8 μm



Surface finish: fine-machined,
and grinded, Ra 0.4 μm



Surface finish: fine-machined,
and grinded, Ra 0.2 μm



表面抛光 Surface polishing

Ra=粗糙度
平均粗糙度Ra值被作为衡量一个内表面光洁度的一个参数。
LT5.6mm 长度/测量Lc0.8mm进行5次测量粗糙度得出的平均值粗糙度Ra值。
根据ASME BPE和DIN 11866。

Ra = roughness
Average roughness Ra data is used as a measure of valve body surface finish of a parameter.
LT5.6 mm length/measurement Lc0.8 mm for five measuring roughness obtained average roughness Ra data.
According ASME BPE table to classified

Definition of the codes for Ra-Values Allocation to the standard DIN 11866

Ra μm	DIN 11866	α
	Hygiene class	E-polished
0.8		
0.8	HE3c	●
0.6		
0.6		●
0.4		
0.4	HE4c	●
0.25		
0.25	HE5c	●

Table SF-2.4-1 R_a Readings for Metallic Product Contact Surfaces

Surface Designation	Mechanically Polished [Note (1)]	
	R _a Max.	
	μ in.	μ m
SF0	No finish requirement	No finish requirement
SF1	20	0.51
SF2	25	0.64
SF3	30	0.76
	Mechanically Polished [Note (1)] and electropolished	
	R _a Max.	
	μ in.	μ m
SF4	15	0.38
SF5	20	0.51
SF6	25	0.64



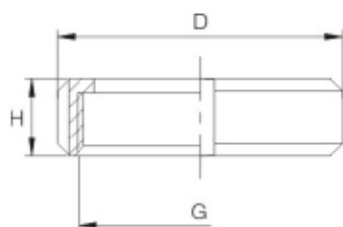
由任-DIN11851 Union-DIN11851



DIN 11851-由任-螺母 Union Nut

适用于: DIN 全系列 Full series

货号代码 Item no. : F020301
(原代码 Original item no. : 60001)

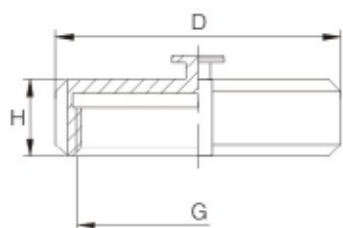


SIZE	尺寸		
	G	H	D
DN10	Rd28x1/8	18	38
DN15	Rd34x1/8	18	44
DN20	Rd44x1/6	20	54
DN25	Rd52x1/6	21	63
DN32	Rd58x1/6	21	70
DN40	Rd65x1/6	21	78
DN50	Rd78x1/6	22	92
DN65	Rd95x1/6	25	110
DN80	Rd110x1/4	27	125
DN100	Rd130x1/4	29	146
DN125	Rd160*1/4	32	178
DN150	Rd190*1/4	38	210

DIN 11851-由任-盲螺母(可带链) Union blind nut (chain is optional)

适用于: DIN 全系列 Full series

货号代码 Item no. : F020303
(原代码 Original item no. : 60034)



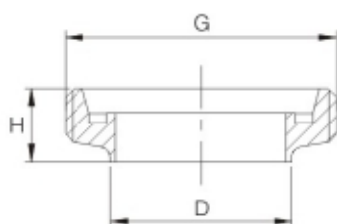
SIZE	尺寸		
	G	H	D
DN10	Rd28x1/8	18	38
DN15	Rd34x1/8	18	44
DN20	Rd44x1/6	20	54
DN25	Rd52x1/6	21	63
DN32	Rd58x1/6	21	70
DN40	Rd65x1/6	21	78
DN50	Rd78x1/6	22	92
DN65	Rd95x1/6	25	110
DN80	Rd110x1/4	27	125
DN100	Rd130x1/4	29	146
DN125	Rd160*1/4	32	178
DN150	Rd190*1/4	38	210

由任-DIN11851 Union-DIN11851

DIN 11851-由任-短型-螺纹接头 Union/short male connector

适用于：推荐系列&第二系列 Recommended series & Second series

货号代码 Item no. : F020311
(原代码 Original item no. : 60002)

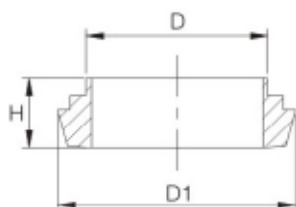


SIZE	尺寸				
	G	H	推荐系列	第二系列	第三系列
DN10	Rd28x1/8	17	12	13	14
DN15	Rd34x1/8	17	18	19	20
DN20	Rd44x1/6	19	22	23	24
DN25	Rd52x1/6	20	28	29	30
DN32	Rd58x1/6	20	34	35	36
DN40	Rd65x1/6	20	40	41	42
DN50	Rd78x1/6	21	52	53	54
DN65	Rd95x1/6	23	70	-	-
DN80	Rd110x1/4	25	85	-	-
DN100	Rd130x1/4	28	104	-	-
DN125	Rd160*1/4	30	129	-	-
DN150	Rd190*1/4	35	154	-	-

DIN 11851-由任-短型-台阶型平接头 Union/short stepped flat connector

适用于：推荐系列&第二系列 Recommended series & Second series

货号代码 Item no. : F020331
(原代码 Original item no. : 60003)

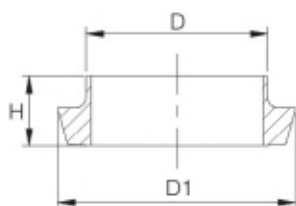


SIZE	尺寸			
	H	推荐系列	第二系列	第三系列
DN10	13	12	13	14
DN15	13	18	19	20
DN20	15	22	23	24
DN25	17	28	29	30
DN32	17	34	35	36
DN40	19	40	41	42
DN50	20	52	53	54
DN65	20	70	-	-
DN80	23	85	-	-
DN100	26	104	-	-
DN125	33	129	-	-
DN150	34	154	-	-

DIN 11851-由任-短型-圆弧型平接头 Union/short circular flat connector

适用于：推荐系列&第二系列 Recommended series & Second series

货号代码 Item no. : F020332
(原代码 Original item no. : 60004)

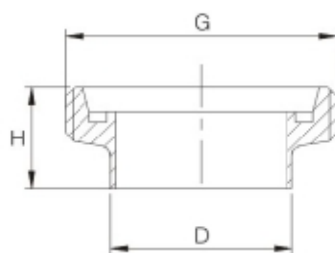


SIZE	尺寸			
	H	推荐系列	第二系列	第三系列
DN10	13	12	13	14
DN15	13	18	19	20
DN20	13	22	23	24
DN25	14	28	29	30
DN32	14	34	35	36
DN40	16	40	41	42
DN50	17	52	53	54
DN65	18	70	-	-
DN80	20	85	-	-
DN100	22	104	-	-
DN125	29	129	-	-
DN150	30	154	-	-

DIN 11851-由任-长型-螺纹接头 Union/long male connector

适用于：推荐系列&第二系列 Recommended series & Second series

货号代码 Item no. : F020312
(原代码 Original item no. : 60007)

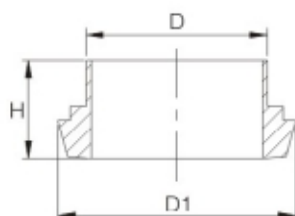


SIZE	尺寸				
	G	H	推荐系列	第二系列	第三系列
DN10	Rd28x1/8	21	12	13	14
DN15	Rd34x1/8	21	18	19	20
DN20	Rd44x1/6	24	22	23	24
DN25	Rd52x1/6	29	28	29	30
DN32	Rd58x1/6	32	34	35	36
DN40	Rd65x1/6	33	40	41	42
DN50	Rd78x1/6	35	52	53	54
DN65	Rd95x1/6	40	70	-	-
DN80	Rd110x1/4	45	85	-	-
DN100	Rd130x1/4	54	104	-	-
DN125	Rd160*1/4	46	129	-	-
DN150	Rd190*1/4	50	154	-	-

DIN 11851-由任-长型-台阶型平接头 Union/long stepped flat connector

适用于：推荐系列&第二系列 Recommended series & Second series

货号代码 Item no. : F020333
(原代码 Original item no. : 60008)

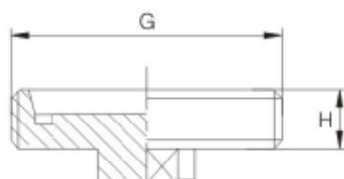


SIZE	尺寸			
	H	推荐系列	第二系列	第三系列
DN10	17	12	13	14
DN15	17	18	19	20
DN20	18	22	23	24
DN25	22	28	29	30
DN32	25	34	35	36
DN40	26	40	41	42
DN50	28	52	53	54
DN65	32	70	-	-
DN80	37	85	-	-
DN100	44	104	-	-
DN125	34	129	-	-
DN150	37	154	-	-

DIN 11851-由任-盲螺纹接头 Union/blind male connector

适用于：推荐系列&第二系列 Recommended series & Second series

货号代码 Item no. : F020313
(原代码 Original item no. : 70003)



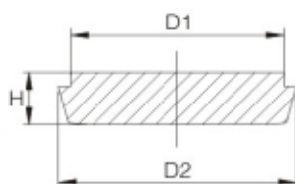
SIZE	尺寸	
	G	H
DN10	Rd28x1/8	13
DN15	Rd34x1/8	13
DN20	Rd44x1/6	15
DN25	Rd52x1/6	15
DN32	Rd58x1/6	15
DN40	Rd65x1/6	15
DN50	Rd78x1/6	15
DN65	Rd95x1/6	17
DN80	Rd110x1/4	19
DN100	Rd130x1/4	20
DN125	Rd160*1/4	21
DN150	Rd190*1/4	26

由任-DIN11851 Union-DIN11851

DIN 11851-由任-盲平接头 Union/blind flat connector

适用于：推荐系列&第二系列 Recommended series & Second series

货号代码 Item no. : F020336
(原代码 Original item no. : 70004)

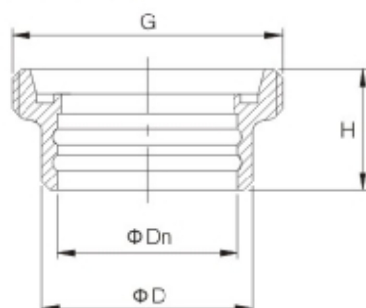


SIZE	尺寸		
	H	D1	D2
DN15	9	24	28
DN20	11	30	36
DN25	13	35	44
DN32	13	41	50
DN40	13	48	56
DN50	15	61	68
DN65	16	79	86
DN80	16	93	100
DN100	20	114	121
DN125	22	137	150
DN150	24	163	176

DIN 11851-由任-膨胀型螺纹接头 Union/expansive male connector

适用于：推荐系列&第二系列 Recommended series & Second series

货号代码 Item no. : F020314
(原代码 Original item no. : 60010)

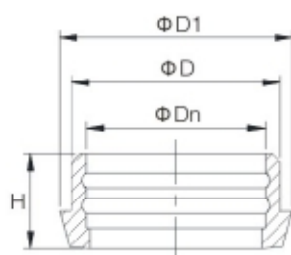


SIZE	尺寸			
	G	H	Dn	D
DN10	Rd28x1/8	21	12.2	18
DN15	Rd34x1/8	21	18.2	24
DN20	Rd44x1/6	24	22.2	30
DN25	Rd52x1/6	29	28.2	35
DN32	Rd58x1/6	32	34.2	41
DN40	Rd65x1/6	33	40.2	48
DN50	Rd78x1/6	35	52.2	61
DN65	Rd95x1/6	40	70.3	79
DN80	Rd110x1/4	45	85.3	93
DN100	Rd130x1/4	54	104.3	114

DIN 11851-由任-膨胀型平接头 Union/expansive flat connector

适用于：推荐系列&第二系列 Recommended series & Second series

货号代码 Item no. : F020335
(原代码 Original item no. : 60009)

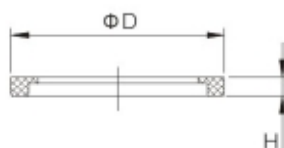


SIZE	尺寸		
	H	Dn	D
DN10	17	12.2	18
DN15	17	18.2	24
DN20	18	22.2	30
DN25	22	28.2	35
DN32	25	34.2	41
DN40	26	40.2	48
DN50	28	52.2	61
DN65	32	70.3	79
DN80	37	85.3	93
DN100	44	104.3	114

DIN 11851-由任垫圈(L型) Union gasket (L type)

适用于: DIN 全系列由任 Full series of union

货号代码 Item no. : F020361



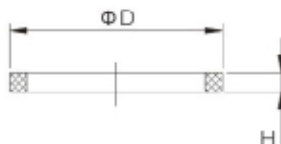
SIZE	尺寸	
	D	H
DN10	20	4.5
DN15	26	4.5
DN20	33	4.5
DN25	40	4.5
DN32	46	5
DN40	52	5
DN50	64	5
DN65	81	5
DN80	95	5
DN100	114	6
DN125	142	7
DN150	167	7

DIN 11851-由任垫圈(D型) Union gasket (D type)

适用于: DIN 全系列由任 Full series of union

货号代码 Item no. : F020362

(原代码 Original item no. : 60039)

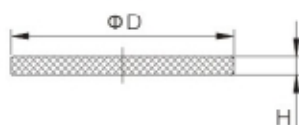


SIZE	尺寸	
	D	H
DN10	20	4
DN15	26	5
DN20	33	5
DN25	40	5
DN32	46	5
DN40	52	5
DN50	64	5
DN65	81	5
DN80	95	5
DN100	114	5
DN125	142	6
DN150	167	6

DIN 11851-由任-盲螺母-垫圈 Union/blind nut/gasket

适用于: DIN 全系列由任 Full series of union

货号代码 Item no. : F020363



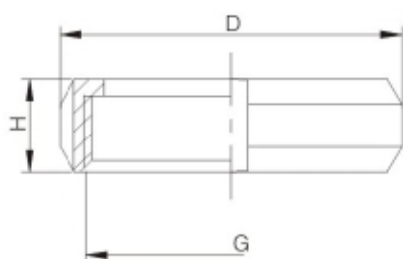
SIZE	尺寸	
	D	H
DN10	28	3
DN15	34	3
DN20	44	3
DN25	52	3
DN32	58	4
DN40	65	4
DN50	78	4
DN65	95	4
DN80	110	4
DN100	130	4
DN125	160	4.5
DN150	185	4.5

由任-SMS Union-SMS

SMS-由任-螺母 Union/Nut

适用于Suitable for ; SMS

货号代码 Cargo code : F030301
(原代码 Original code : 60011)

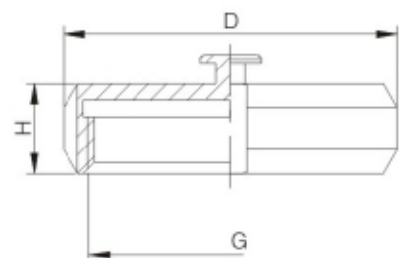


SIZE	尺寸		
	G(ACME)	H	D
25	Rd40x1/6	20	50
32	Rd48x1/6	20	60
38	Rd60x1/6	22	72
51	Rd70x1/6	22	82
63	Rd85x1/6	25	97
76	Rd98x1/6	26	111
89	Rd105x1/6	28	118
102(S)	Rd125x1/4	30	138
102(L)	Rd132x1/6	30	146

SMS-由任-盲螺母(可带链) Union-Blind nut(chain is available)

适用于Suitable for ; SMS

货号代码 Cargo code : F030303
(原代码 Original code : 60035)

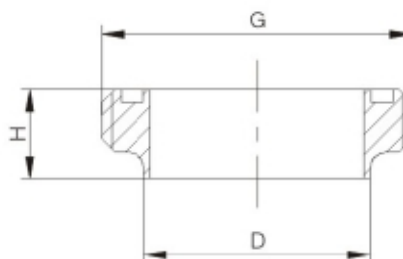


SIZE	尺寸		
	G	H	D
25	Rd40x1/6	20	50
32	Rd48x1/6	20	60
38	Rd60x1/6	22	72
51	Rd70x1/6	22	82
63	Rd85x1/6	25	97
76	Rd98x1/6	26	111
89	Rd105x1/6	28	118
102(S)	Rd125x1/4	30	138
102(L)	Rd132x1/6	30	146

SMS-由任-短型-螺纹接头 Union-short type-male

适用于Suitable for ; SMS

货号代码 Cargo code : F030311
(原代码 Original code : 60012)



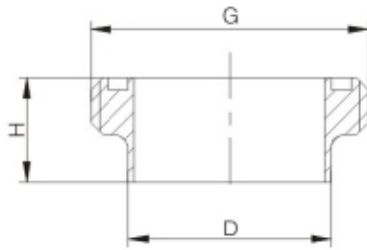
SIZE	尺寸		
	G	H	D
25	Rd40x1/6	19	25.4
32	Rd48x1/6	18	31.8
38	Rd60x1/6	20	38.1
51	Rd70x1/6	20	50.8
63	Rd85x1/6	24	63.5
76	Rd98x1/6	25	76.2
89	Rd105x1/6	26	89
102(S)	Rd125x1/4	27	101.6
102(L)	Rd132x1/6	27	101.6



SMS由任-长型-螺纹接头 Union-long type-male

适用于Suitable for ; SMS

货号代码 Cargo code : F030312
(原代码 Original code : 60016)

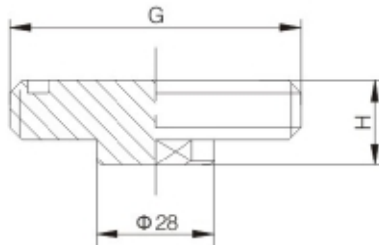


SIZE	尺寸		
	G	H	D
25	Rd40x1/6	19	25.4
38	Rd60x1/6	23	38.1
51	Rd70x1/6	23	50.8
63	Rd85x1/6	27	63.5
76	Rd98x1/6	28	76.2
102(S)	Rd125x1/4	30	101.6
102(L)	Rd132x1/6	44	101.6

SMS由任-盲螺纹接头 Union-Blind male

适用于Suitable for ; SMS

货号代码 Cargo code : F030313

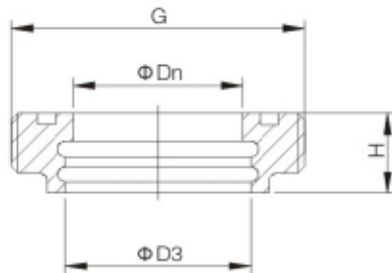


SIZE	尺寸		
	G	H	D
25	Rd40x1/6	19	25.4
32	Rd48x1/6	18	31.8
38	Rd60x1/6	20	38.1
51	Rd70x1/6	20	50.8
63	Rd85x1/6	24	63.5
76	Rd98x1/6	25	76.2
89	Rd105x1/6	26	89
102(S)	Rd125x1/4	27	101.6
102(L)	Rd132x1/6	27	101.6

SMS由任-膨胀型螺纹接头 Union-Expanded male

适用于Suitable for ; SMS

货号代码 Cargo code : F030314
(原代码 Original code : 70063)



SIZE	尺寸		
	G	H	D3
25	Rd40x1/6	20	25.5
32	Rd48x1/6	20	32.2
38	Rd60x1/6	23	38.3
51	Rd70x1/6	25	51.2
63	Rd85x1/6	30	63.7
76	Rd98x1/6	35	76.4
102(S)	Rd125x1/4	30	102
102(L)	Rd132x1/6	30	104.4

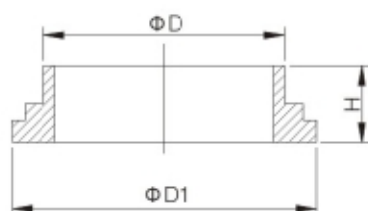


由任-SMS Union-SMS

SMS由任-短型-台阶性平接头 Union-short type-stepped liner

适用于Suitable for : SMS

货号代码 Cargo code : F030331
(原代码 Original code : 60014)

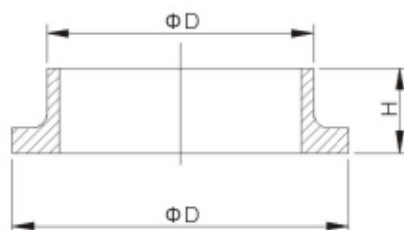


SIZE	尺寸		
	D1	H	D
25	35.5	12	25.4
32	43.5	12	31.8
38	55.5	13	38.1
51	65.5	13	50.8
63	80.5	14	63.5
76	93.5	14	76.2
89	101	15	89
102(S)	118	17	101.6
102(L)	127.5	17	101.6

SMS由任-短型-圆弧型平接头 Union-short type-circular liner

适用于Suitable for : SMS

货号代码 Cargo code : F030332
(原代码 Original code : 60013)

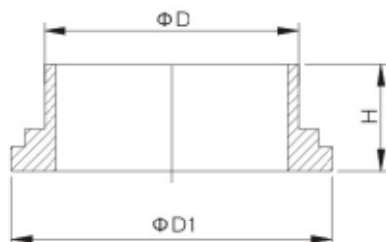


SIZE	尺寸		
	D1	H	D
25	35.5	12	25.4
32	43.5	12	31.8
38	55.5	13	38.1
51	65.5	13	50.8
63	80	14	63.5
76	93	14	76.2
89	101	15	89
102(S)	118	17	101.6
102(L)	127.5	17	101.6

SMS由任-长型-台阶型平接头 Union-long type-stepped liner

适用于Suitable for : SMS

货号代码 Cargo code : F030333
(原代码 Original code : 60018)



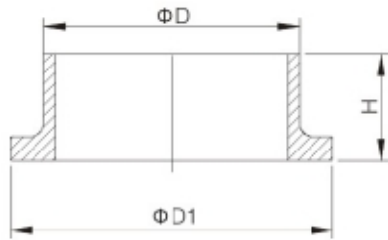
SIZE	尺寸		
	D1	H	D
25	35.5	15	25.4
38	55.5	20	38.1
51	65.5	20	50.8
63	80.5	21	63.5
76	93.5	21	76.2
102(S)	118	21	101.6
102(L)	127.5	21	101.6



SMS由任-长型-圆弧型平接头 Union-long type-circular liner

适用于Suitable for ; SMS

货号代码 Cargo code : F030334
(原代码 Original code : 60017)

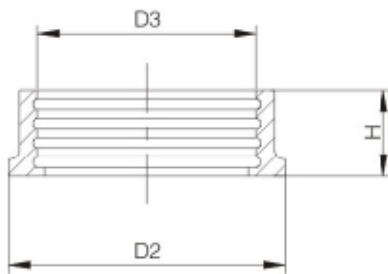


SIZE	尺寸		
	D1	H	D
25	35.5	15	25.4
38	55.5	20	38.1
51	65.5	20	50.8
63	80	21	63.5
76	93	21	76.2
102(S)	118	21	101.6
102(L)	127.5	21	101.6

SMS由任-膨胀型平接头 Expanded liner

适用于Suitable for ; SMS

货号代码 Cargo code : F030335
(原代码 Original code : 70064)

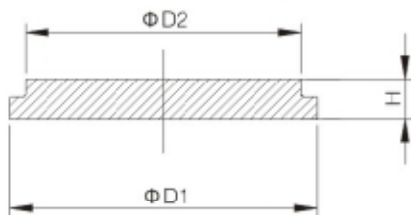


SIZE	尺寸		
	D2	H	D3
25	35.5	17	25.5
32	43.5	17	32.2
38	55	20	38.3
51	65.5	20	51.2
63	80	25	63.7
76	93	30	76.4
102(S)	118	27	102
102(L)	118	27	104.4

SMS由任-盲平接头 Blind liner

适用于Suitable for ; SMS

货号代码 Cargo code : F030336
(原代码 Original code : 70062)



SIZE	尺寸		
	D1	H	D2
25	35.5	7	31.2
32	43.5	7	39.2
38	55.5	8	47
51	65.5	8	59.5
63	80.5	8	73
76	93.5	8	86
89	101	8	95
102(S)	118	10	112
102(L)	127.5	10	116

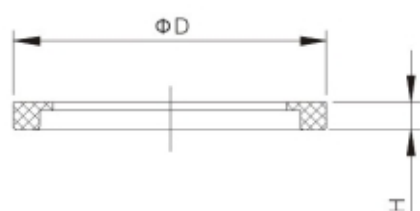


由任-SMS Union-SMS

SMS由任-垫圈(L型)-推荐型 Gasket(Ltype)-recommended

适用于Suitable for : SMS

货号代码 Cargo code : F030362

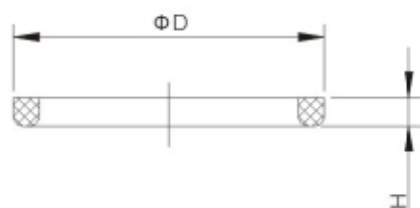


SIZE	尺寸	
	D1	H
19	26	5.5
25	33	5.5
32	40	5.5
38	48	5.5
51	61	5.5
63	73	5.5
76	86	6
89	98	6
102	114	6

SMS由任-垫圈(D型) Gasket(D type)

适用于Suitable for : SMS

货号代码 Cargo code : F030361

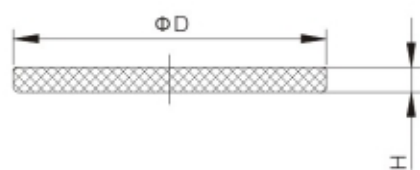


SIZE	尺寸	
	D	H
19	26	5.5
25	33	5.5
32	40	5.5
38	48	5.5
51	61	5.5
63	73	5.5
76	86	6
89	98	6
102	114	6

SMS由任-盲螺母-垫圈 Blind nut gasket

适用于Suitable for : SMS

货号代码 Cargo code : F030363



SIZE	尺寸	
	D	H
25	40	3
32	48	3
38	60	3
51	70	3
63	85	3
76	98	3
89	105	4
102(S)	125	4
102(L)	132	4

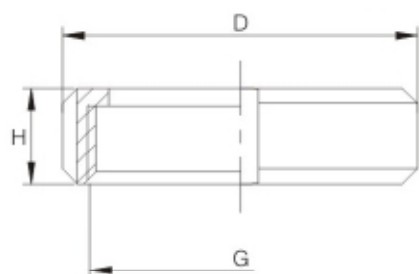
RJT-由任 RJT-union



RJT-由任-圆螺母 RJT/union/round nut

适用于Suitable for : RJT-AS/BS

货号代码 Cargo code : F110301
(原代码 Original code : 60030)

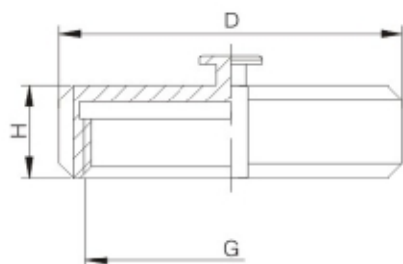


SIZE	尺寸		
	G(WHIT)	H	D
1"	45.7X1/8	22	56
1.5"	58.4X1/8	22	69
2"	72.7X1/6	22	83
2.5"	85.4X1/6	22	97
3"	98.1X1/6	22	110
4"	123.8X1/6	22	136
6"	174.3X1/6	23.5	197

RJT-由任-盲圆螺母(可带链) RJT/union/blind round nut (with chain)

适用于Suitable for : RJT-AS/BS

货号代码 Cargo code : F110303
(原代码 Original code : 60038)



SIZE	尺寸		
	G(WHIT)	H	D
1"	45.7X1/8	22	58.5
1.5"	58.4X1/8	22	74
2"	72.7X1/6	22	85.5
2.5"	85.4X1/6	22	98.5
3"	98.1X1/6	22	111.6
4"	123.8X1/6	22	138

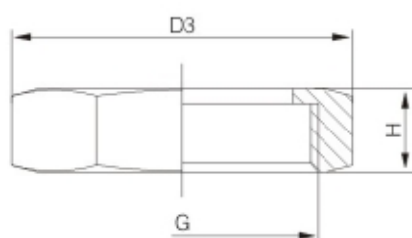
RJT-由任

RJT-union

RJT-由任-六角螺母 RJT/union/hexagon nut

适用于Suitable for : RJT-AS/BS

货号代码 Cargo code : F110305
(原代码 Original code : 60031)

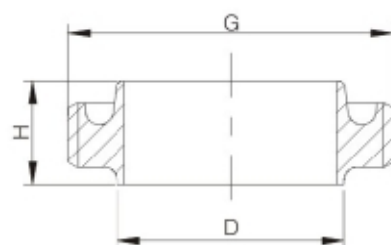


SIZE	尺寸		
	G(WHIT)	H	D3
1"	45.7X1/8	22	58.7
1.5"	58.4X1/8	22	74
2"	72.7X1/6	22	90
2.5"	85.4X1/6	22	105
3"	98.1X1/6	22	120
4"	123.8X1/6	22	150
6"	174.3X1/6	24	203.5

RJT由任-短型螺纹接头 RJT union/short male

适用于Suitable for : RJT-AS/BS

货号代码 Cargo code : F110311
(原代码 Original code : 70051)

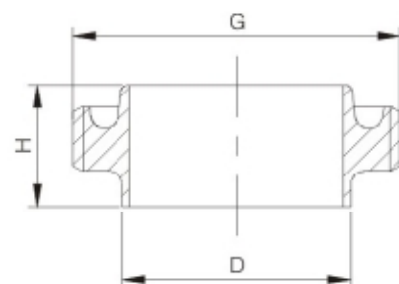


SIZE	尺寸		
	G(WHIT)	H	D
1"	45.7X1/8	21.5	25.65
1.5"	58.4X1/8	21.5	38.35
2"	72.7X1/6	21.5	51.05
2.5"	85.4X1/6	21.5	63.75
3"	98.1X1/6	21.5	76.45
4"	123.5X1/6	21.5	101.85

RJT由任-长型-螺纹接头 RJT union/long male

适用于Suitable for : RJT-AS/BS

货号代码 Cargo code : F110312
(原代码 Original code : 60032)

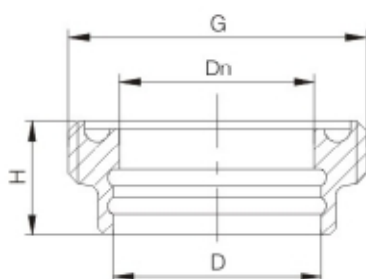


SIZE	尺寸		
	G(WHIT)	H	D
1"	45.7X1/8	27	25.65
1.5"	58.4X1/8	27	38.35
2"	72.7X1/6	27	51.05
2.5"	85.4X1/6	27	63.75
3"	98.1X1/6	27	76.45
4"	123.5X1/6	27	101.85
6"	174.3X1/6	24	152.4

RJT由任-膨胀型螺纹接头 RJT union/expansive type male

适用于Suitable for ; RJT-AS/BS

货号代码 Cargo code : F110314
(原代码 Original code : 70054)

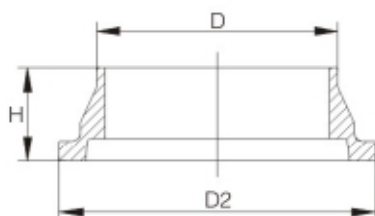


SIZE	尺寸		
	G(WHIT)	H	D
1"	45.7X1/8	20	25.5
1.5"	58.4X1/8	24	38.2
2"	72.7X1/6	28	50.9
2.5"	85.4X1/6	32	63.6
3"	98.1X1/6	32	76.3
4"	123.5X1/6	32	101.7

RJT由任-短型-平接头 RJT union/short type/liner

适用于Suitable for ; RJT-AS

货号代码 Cargo code : F110331
(原代码 Original code : 60033)

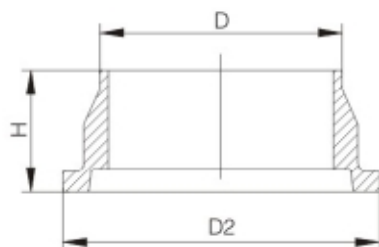


SIZE	尺寸		
	D	D2	H
1"	25.65	41.3	19.5
1.5"	38.35	54	19.5
2"	51.05	66.7	19.5
2.5"	63.75	79.4	19.5
3"	76.45	92.1	19.5
4"	101.85	117.5	19.5
6"	152.4	169.1	23.5

RJT由任-长型-平接头 RJT union/long type/liner

适用于Suitable for ; RJT-AS

货号代码 Cargo code : F110333
(原代码 Original code : 70050)



SIZE	尺寸		
	D	D2	H
1"	25.65	41.3	27
1.5"	38.35	54	27
2"	51.05	66.7	27
2.5"	63.75	79.4	27
3"	76.45	92.1	27
4"	101.85	117.5	27

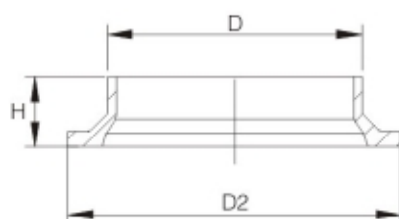
RJT-由任

RJT-union

RJT由任-平接头 RJT union/liner

价格适用于Suitable for : RJT-BS

货号代码 Cargo code : F110334
(原代码 Original code : 70056)

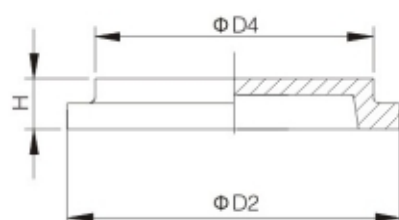


SIZE	尺寸		
	D	D2	H
1"	25.65	41.3	12.7
1.5"	38.35	54	12.7
2"	51.05	66.7	12.7
2.5"	63.75	79.4	12.7
3"	76.45	92.1	12.7
4"	101.85	117.5	25.4

RJT由任-盲平接头 RJT union/blind liner

适用于Suitable for : RJT-AS/BS

货号代码 Cargo code : F110336

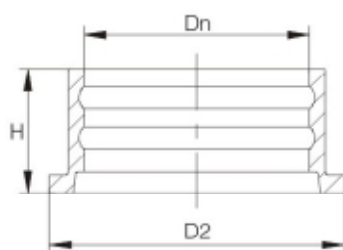


SIZE	尺寸		
	D4	H	D2
1"	32.4	8.2	41.3
1.5"	45.1	8.2	54
2"	57.8	8.2	66.7
2.5"	70.5	8.2	79.4
3"	83.1	8.2	92.1
4"	108.6	8.2	117.5
6"	161.8	8.2	169.1

RJT由任-膨胀型平接头 RJT union/expansive type liner

适用于Suitable for : RJT-AS/BS

货号代码 Cargo code : F110335
(原代码 Original code : 70053)

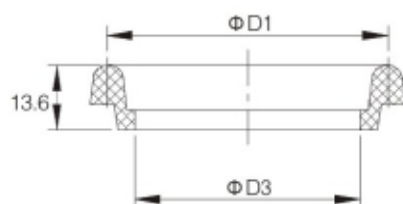


SIZE	尺寸		
	Dn	D2	H
1"	25.5	41.3	20
1.5"	38.2	54	24
2"	50.9	66.7	28
2.5"	63.6	79.4	32
3"	73	92.1	32
4"	97.6	117.5	32

RJT由任-垫圈(U型) RJT union/gasket(U type)

适用于Suitable for : RJT-AS

货号代码 Cargo code : F110361
(原代码 Original code : 60043-01)

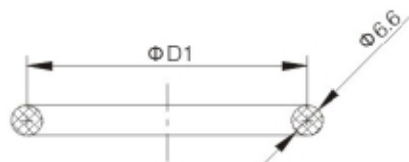


SIZE	尺寸	
	D1	D3
1"	33.3	22.2
1.5"	46	34.9
2"	58.7	47.6
2.5"	71.4	60.3
3"	84.1	73.6
4"	109.5	97.5
6"	162.6	148.5

RJT由任-垫圈(O型圈) RJT union/gasket(O type)

适用于Suitable for : RJT-AS/BS

货号代码 Cargo code : F110362
(原代码 Original code : 60043-02)

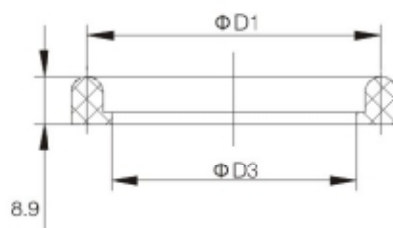


SIZE	尺寸
	D1
1"	33.3
1.5"	46
2"	58.7
2.5"	71.4
3"	84.1
4"	109.5
6"	162.6

RJT由任-垫圈(L型) RJT union/gasket(L type)

适用于Suitable for : RJT-AS/BS

货号代码 Cargo code : F110363
(原代码 Original code : 60043-03)



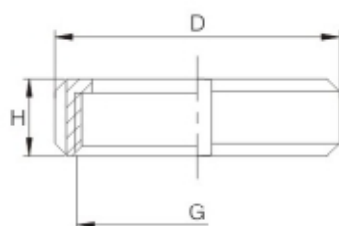
SIZE	尺寸	
	D1	D3
1"	33.3	22.2
1.5"	46	34.9
2"	58.7	47.6
2.5"	71.4	60.3
3"	84.1	73.6
4"	109.5	97.5
6"	162.6	148.5

ISO-IDF-由任 ISO-IDF-union

ISO-IDF-由任-圆螺母 ISO/IDF/union/round nut

适用于Suitable for ; ISO-IDF

货号代码 Cargo code : F050301
(原代码 Original code : 60019)

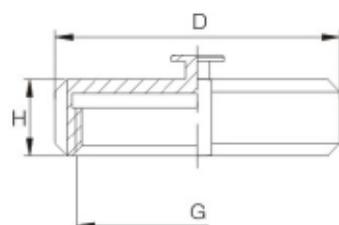


SIZE	尺寸		
	G(ACME)	H	D
1"	38.3x1/8	30	48
1.5"	51.8x1/8	30	62
2"	65.3x1/8	30	76
2.5"	78.8x1/8	30	90
3"	92.3x1/8	30	103
4"(IDF)	127.2x1/6	35	142
4"(ISO)	119.4x1/8	30	133

ISO-IDF-由任-盲螺母 (可带链) ISO/IDF/union/blind nut(available with chain)

适用于Suitable for ; ISO-IDF

货号代码 Cargo code : F050303

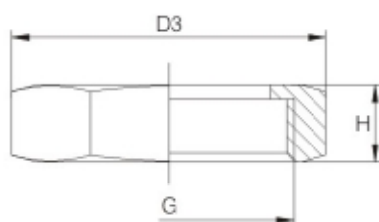


SIZE	尺寸		
	G(ACME)	H	D
1"	38.3x1/8	30	48
1.5"	51.8x1/8	30	62
2"	65.3x1/8	30	76
2.5"	78.8x1/8	30	90
3"	92.3x1/8	30	103
4"(ISO)	119.4x1/8	30	133
4"(IDF)	127.2x1/8	35	142

ISO-IDF-由任-六角螺母 ISO/IDF/union/hexagon nut

适用于Suitable for ; ISO-IDF

货号代码 Cargo code : F050305
(原代码 Original code : 60020)



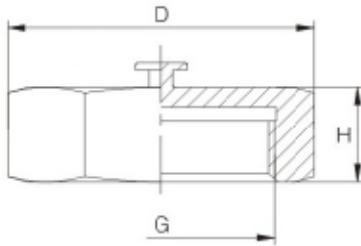
SIZE	尺寸		
	G(ACME)	H	D3
1"	38.3x1/8	30	49.7
1.5"	51.8x1/8	30	65.8
2"	65.3x1/8	30	82
2.5"	78.8x1/8	30	99.3
3"	92.3x1/8	30	115.5
4"(ISO)	119.4x1/8	30	150.1
4"(IDF)	127.2x1/6	35	157



ISO-IDF-由任-六角盲螺母(可带链) ISO/IDF/union/hexagon blind nut

适用于Suitable for ; ISO-IDF

货号代码 Cargo code : F050307

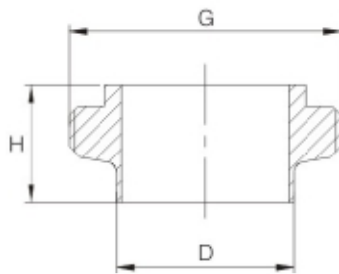


SIZE	尺寸		
	G(ACME)	H	D
1"	33.3x1/8	30	49.7
1.5"	51.8x1/8	30	65.8
2"	65.3x1/8	30	82
2.5"	78.8x1/8	30	99.3
3"	92.3x1/8	30	115.5
4"(IDF)	127.2x1/8	35	157
4"(ISO)	119.4x1/8	30	150.1

ISO-IDF-由任-螺纹接头 ISO/IDF/union/male

适用于Suitable for ; ISO-IDF

货号代码 Cargo code : F050311
(原代码 Original code : 60021)

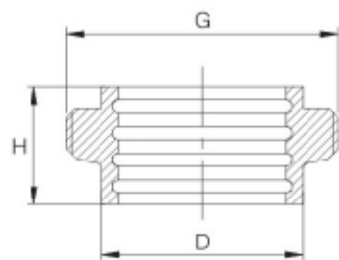


SIZE	尺寸		
	G(ACME)	H	D
1"	37.13x1/8	21.5	25.4
1.5"	50.65x1/8	21.5	38.1
2"	64.16x1/8	21.5	50.8
2.5"	77.7x1/8	21.5	63.5
3"	91.2x1/8	21.5	76.2
4"(IDF)	125.9x1/8	30	101.6
4"(ISO)	118.4x1/8	21.5	102.5

ISO-IDF-由任-膨胀型螺纹接头 ISO/IDF/union/expansive type male

适用于Suitable for ; ISO-IDF

货号代码 Cargo code : F050314
(原代码 Original code : 70041)



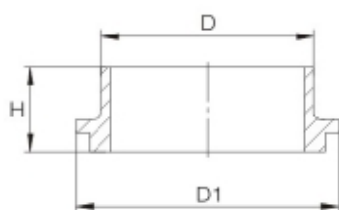
SIZE	尺寸		
	G(ACME)	H	D3
1"	37.13x1/8	16.5	29.2
1.5"	50.65x1/8	19.5	42.7
2"	64.16x1/8	19.5	56.2
2.5"	77.7x1/8	25	69.9
3"	91.2x1/8	30	82.6
4"	125.9x1/8	35	111.1

ISO-IDF-由任 ISO-IDF-union

ISO-IDF-由任-平接头 (圆弧) ISO/IDF/union/liner(circular)

适用于Suitable for ; ISO-IDF

货号代码 Cargo code : F050332
(原代码 Original code : 60022)

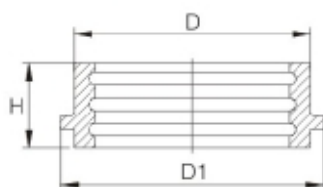


SIZE	尺寸		
	H	D(IDF/ISO)	D1
1"	21.5	25.4	33.8
1.5"	21.5	38.1	47
2"	21.5	50.8	60.5
2.5"	21.5	63.5	74
3"	21.5	76.2	87.5
4"(IDF)	30	101.6	120.6
4"(ISO)	21.5	101.6	114.1

ISO-IDF-由任-膨胀型平接头 ISO/IDF/union/expansive type liner

适用于Suitable for ; ISO-IDF

货号代码 Cargo code : F050335
(原代码 Original code : 70042)

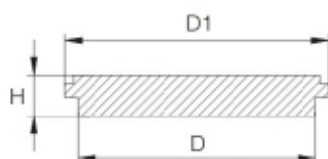


SIZE	尺寸		
	H	D	D1
1"	20	29.2	33.8
1.5"	20	42.7	47
2"	25	56.2	60.5
2.5"	30	69.9	74
3"	30	82.6	87.5
4"	30	111.1	120.6

ISO-IDF-由任-盲平接头 ISO/IDF/union/blind liner

适用于Suitable for ; ISO-IDF

货号代码 Cargo code : F050336
(原代码 Original code : 70043)



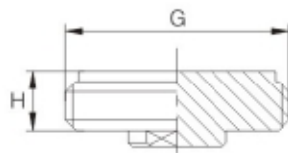
SIZE	尺寸		
	H	D	D1
1"	11	29.2	33.8
1.5"	11	42.7	47
2"	11	56.2	60.5
2.5"	11	69.9	74
3"	11	82.6	87.5
4"(IDF)	11	111.1	120.6
4"(ISO)	11	108.7	114.1



ISO-IDF-由任-盲螺纹接头 ISO/IDF/union/blind male

适用于Suitable for ; ISO-IDF

货号代码 Cargo code : F050313
(原代码 Original code : 70044)

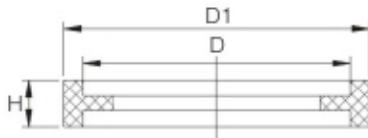


SIZE	尺寸	
	G(ACME)	H
1"	37.13x1/8	17
1.5"	50.65x1/8	17
2"	64.16x1/8	17
2.5"	77.7x1/8	17
3"	91.2x1/8	17
4"(ISO)	118.4x1/8	17
4"(IDF)	125.9x1/6	17

ISO-IDF-由任-垫圈 ISO/IDF/union/gasket

适用于Suitable for ; ISO-IDF

货号代码 Cargo code : F050361
(原代码 Original code : 60042)

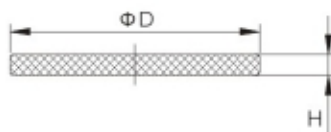


SIZE	尺寸		
	H	D	D1
1"	7	29.2	32.5
1.5"	7	43	46
2"	7	56.5	59.5
2.5"	7	70.2	73
3"	7	82.9	86.5
4"(ISO)	7	104	113.1
4"(IDF)	9.6	111	119

ISO/DIF-由任-盲螺母垫圈 ISO/IDF/union/blind gasket

适用于Suitable for ; 3A

货号代码 Cargo code : F050362



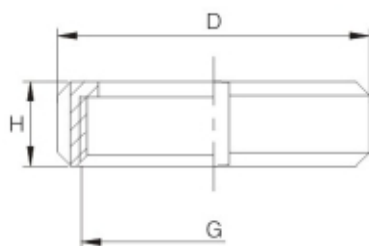
SIZE	尺寸	
	D	H
1"	38	3
1.5"	51	3
2"	65	3
2.5"	78	3
3"	92	3
4"(ISO)	120	4
4"(IDF)	127	4

DS-由任 DS-Union

DS-由任-圆螺母 DS/Union/Round Nut

适用于Suitable for: DS

货号代码 Cargo code : F080301
(原代码 Original code : 70020)

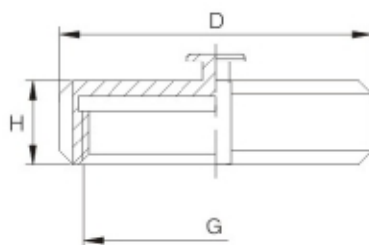


SIZE	尺寸		
	G	H	D
1"	RD44x1/6	20	57
1 1/4"	RD52x1/6	20	65
1 1/2"	RD58x1/6	20	71
2"	RD72x1/6	22	86
2 1/2"	RD88x1/6	24	103
3"	RD100x1/6	25	115
4"	RD130x1/4	31	148

DS-由任-盲螺母 (带链) DS/Union/Blind Nut(Available with chain)

适用于Suitable for: DS

货号代码 Cargo code : F080303
(原代码 Original code : 70022)

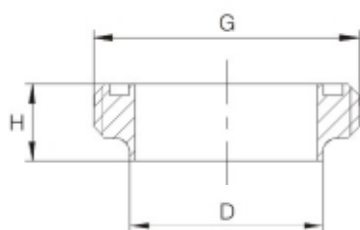


SIZE	尺寸		
	G	H	D
1"	RD44x1/6	20	57
1 1/4"	RD52x1/6	20	65
1 1/2"	RD58x1/6	20	71
2"	RD72x1/6	22	86
2 1/2"	RD88x1/6	24	103
3"	RD100x1/6	25	115
4"	RD130x1/4	31	148

DS-由任-短型-螺纹接头 DS/Union/Short Male

适用于Suitable for: DS

货号代码 Cargo code : F080311
(原代码 Original code : 70024)

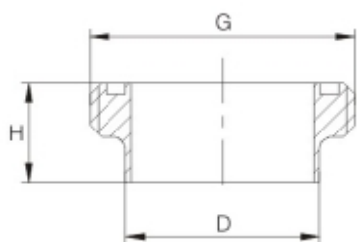


SIZE	尺寸		
	G	H	D
1"	RD44x1/6	18.5	25
1 1/4"	RD52x1/6	18.5	32
1 1/2"	RD58x1/6	20	38
2"	RD72x1/6	20	51
2 1/2"	RD88x1/6	24	63.5
3"	RD100x1/6	24	76
4"	RD130x1/4	24	101.6

DS-由任-长型-螺纹接头 DS/Union/Long Male

适用于Suitable for: DS

货号代码 Cargo code : F080312
(原代码 Original code : 70023)

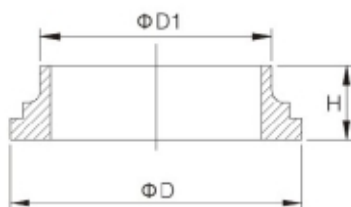


SIZE	尺寸		
	G	H	D
1"	RD44x1/6	20	25
1 1/4"	RD52x1/6	20	32
1 1/2"	RD58x1/6	22	38
2"	RD72x1/6	24	51
2 1/2"	RD88x1/6	26	63.5
3"	RD100x1/6	28	76
4"	RD130x1/4	34	101.6

DS-由任-短型-平接头(圆弧) DS/Union/Short Liner(Arc)

适用于Suitable for: DS

货号代码 Cargo code : F080332
(原代码 Original code : 70026)

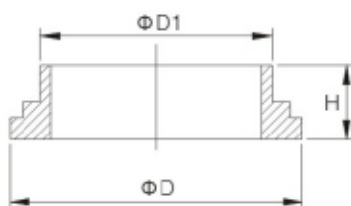


SIZE	尺寸		
	H	D	D1
1"	11	39.5	25
1.5"	11	53.5	38
2"	11	67.5	51
2.5"	12	83.5	63.5
3"	12	95.5	76
4"	12	123.5	101.6

DS-由任-长型-平接头(台阶) DS/Union/Long Liner(Step)

适用于Suitable for: DS

货号代码 Cargo code : F080333
(原代码 Original code : 70025)



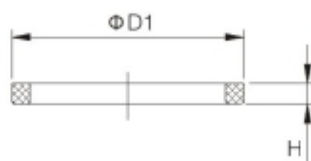
SIZE	尺寸		
	H	D	D1
1"	16	39.5	25
1.25"	16	47.5	32
1.5"	18	53.5	38
2"	20	67.5	51
2.5"	22	83.5	63.5
3"	24	95.5	76
4"	30	123.5	101.6

DS-由任 DS-Union

DS-由任-活接头密封垫 DS/Union/Gasket

适用于Suitable for: DS

货号代码 Cargo code : F080361
(原代码 Original code : 70029)

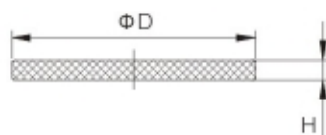


SIZE	尺寸		
	H	D	D1
1"	5.5	25.2	32.2
1.25"	5.5	31.7	41
1.5"	5.5	38	47
2"	5.5	50.5	59
2.5"	5.5	63.5	74.5
3"	5.5	76	88
4"	5.5	101.6	116

DS-由任-盲螺母垫圈 DS/Union/Blind Nut Gasket

适用于Suitable for: DS

货号代码 Cargo code : F080362



SIZE	尺寸	
	H	D
1"	3	44
1.25"	3	52
1.5"	3	58
2"	3	72
2.5"	3	88
3"	3	100
4"	4	130



3A-由任 3A-Union



斜座式由任，由螺母、螺纹接头、平接头组成，能够承受每天拆装清洗，重新组装管路和设备。

规格：1-4"

材质：304/316L

粗糙度：Ra0.8 μm

认证：3A-63-03



Bevel Seat Union is made up of nut and male and liner. It can accept every day disassembly cleaning and re-assembly pipe and equipment.

Size: 1-4"

Material: 304/316L

Roughness: Ra0.8 μm

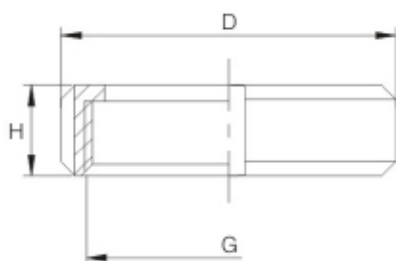
Certification: 3A-63-03

3A-由任-圆螺母 3A/Union/Round Nut

适用于Suitable for: 3A

货号代码 Cargo code : F040301

(原代码 Original code : 60096)

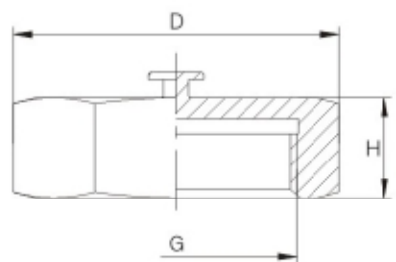


SIZE	尺寸		
	G(ACME)	H	D
1"	38.02x1/8	23	48
1.5"	51.54x1/8	24.6	62
2"	65.05x1/8	27	75
2.5"	78.56x1/8	29.6	90
3"	92.08x1/8	32.5	103
4"	120.14x1/6	38.1	132

3A-由任-盲型六角螺母 3A/Union/Blind Hexagon Nut

适用于Suitable for: 3A

货号代码 Cargo code : F040307



SIZE	尺寸		
	G(ACME)	H	D
1"	38.02x1/8	23	52
1.5"	51.54x1/8	24.6	70.6
2"	65.05x1/8	27	88
2.5"	78.56x1/8	29.6	105.5
3"	92.08x1/8	32.5	122.9
4"	120.14x1/6	38.1	158.9

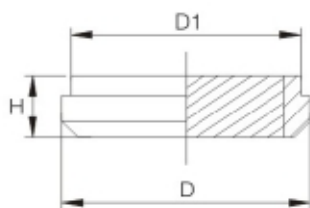
3A-由任

3A-Union

3A-由任-盲平接头 3A/Union/Blind Liner

适用于Suitable for: 3A

货号代码 Cargo code : F040336
(原代码 Original code : 60095)

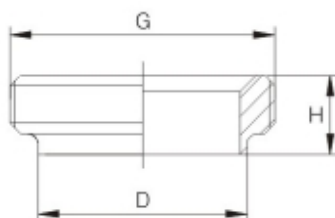


SIZE	尺寸		
	H	D	D1
1"	11.9	33.3	29.5
1.5"	14.3	46.8	42.6
2"	15.9	60.3	55.7
2.5"	16.7	73.8	68.8
3"	18.3	87.3	81.9
4"	20.6	114.3	108.1

3A-由任-短型-螺纹接头 3A/Union/Male(Short)

适用于Suitable for: 3A

货号代码 Cargo code : F040311
(原代码 Original code : 70103)

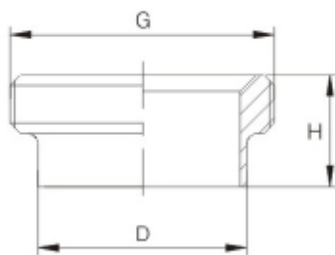


SIZE	尺寸		
	G(ACME)	H	D
1"	37.13x1/8	18.3	25.4
1.5"	50.65x1/8	18.3	38.1
2"	64.1x1/8	19.1	50.8
2.5"	77.6x1/8	22.3	63.5
3"	91.1x1/8	23.1	76.2
3.5"	105.5x1/8	23.1	88.9
4"	119.25x1/8	26.2	101.6

3A-由任-长型-螺纹接头 3A/Union/Male(Long)

适用于Suitable for: 3A

货号代码 Cargo code : F040312
(原代码 Original code : 70102)

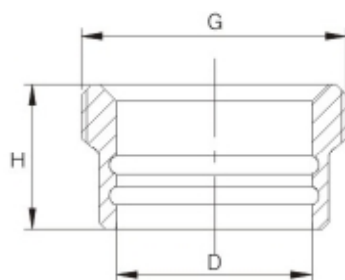


SIZE	尺寸		
	G(ACME)	H	D
1"	37.13x1/8	34.9	25.4
1.5"	50.65x1/8	38.1	38.1
2"	64.1x1/8	38.1	50.8
2.5"	77.6x1/8	44.5	63.5
3"	91.1x1/8	44.5	76.2
4"	119.25x1/8	44.5	101.6

3A-由任-膨胀型螺纹接头 3A/Union/Expanded Male

适用于Suitable for: 3A

货号代码 Cargo code : F040314
(原代码 Original code : 70101)

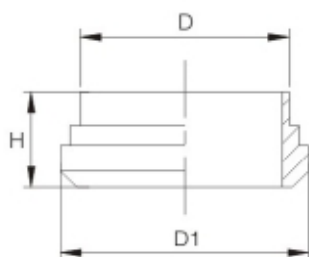


SIZE	尺寸		
	G(ACME)	H	D
1"	37.13x1/8	20.6	22.2
1.5"	50.65x1/8	28.6	34.9
2"	64.1x1/8	34.9	47.6
2.5"	77.6x1/8	38.1	60.3
3"	91.1x1/8	41.3	73
4"	119.25x1/6	41.3	97.6

3A-由任-短型-台阶型平接头 3A/Union/Stepped Liner(Short)

适用于Suitable for: 3A

货号代码 Cargo code : F040331
(原代码 Original code : 60094)

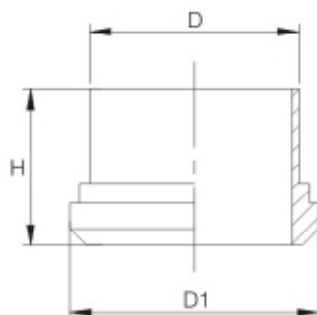


SIZE	尺寸		
	H	D	D1
1"	18.3	25.4	33.3
1.5"	18.3	38.1	46.8
2"	19.1	50.8	60.3
2.5"	22.3	63.5	73.8
3"	23.1	76.2	87.3
4"	26.2	101.6	114.3

3A-由任-长型-台阶型平接头 3A/Union/Stepped Liner(long)

适用于Suitable for: 3A

货号代码 Cargo code : F040333
(原代码 Original code : 60093)



SIZE	尺寸		
	H	D	D1
1"	34.9	25.4	33.3
1.5"	38.1	38.1	46.8
2"	38.1	50.8	60.3
2.5"	44.5	63.5	73.8
3"	44.5	76.2	87.3
4"	44.5	101.6	114.3

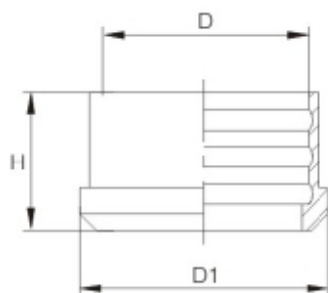
3A-由任

3A-Union

3A-由任-膨胀型平接头 3A/Union/Expanded Liner

适用于Suitable for: 3A

货号代码 Cargo code : F040335
(原代码 Original code : 60092)

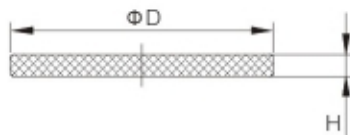


SIZE	尺寸		
	H	D	D1
1"	19.1	25.5	33.3
1.5"	28.6	38.2	46.8
2"	33.3	50.9	60.3
2.5"	34.9	63.6	73.8
3"	36.5	76.3	87.3
4"	38.1	101.7	114.3

3A-由任-盲螺母垫圈 3A/Union/Blind Nut Gasket

适用于Suitable for: 3A

货号代码 Cargo code : F040361

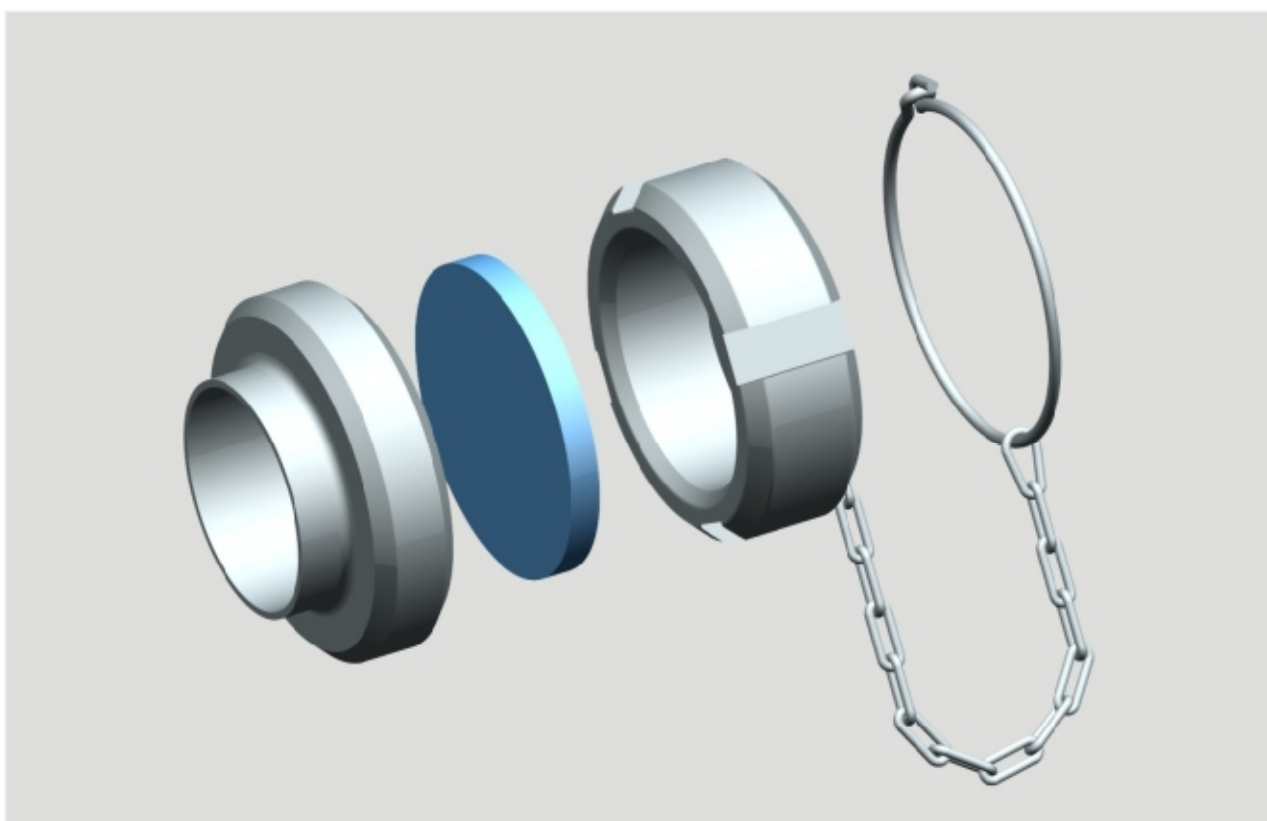


SIZE	尺寸	
	D	H
1"	33	3
1.5"	51	3
2"	65	3
2.5"	78	3
3"	92	3
4"	120	4

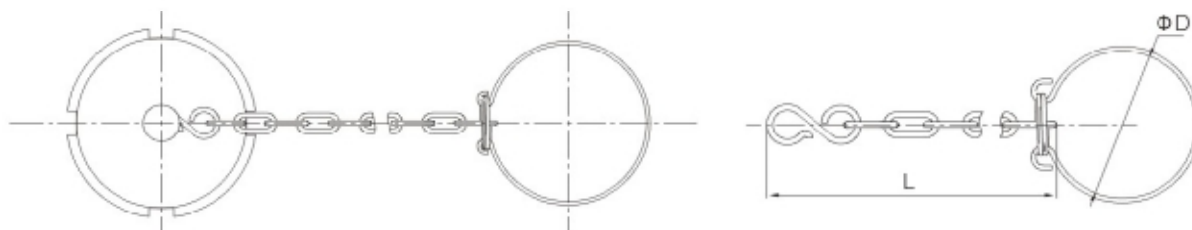


链条组件 Chain components

盲螺母带链条 Blind nut with chain

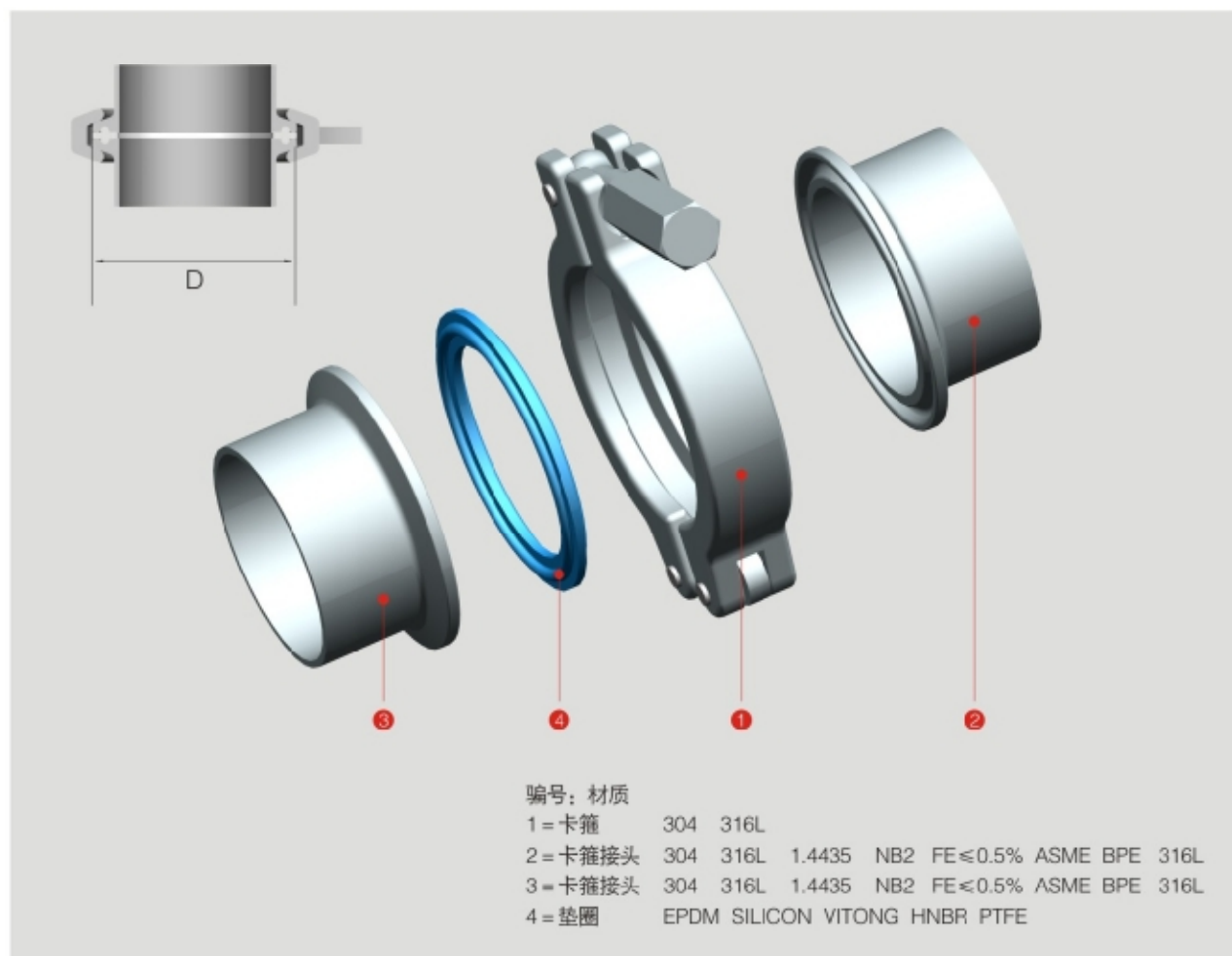


货号代码 Cargo code : F000371 适用于所有标准盲螺母 Apply for all standraded Blind Nut



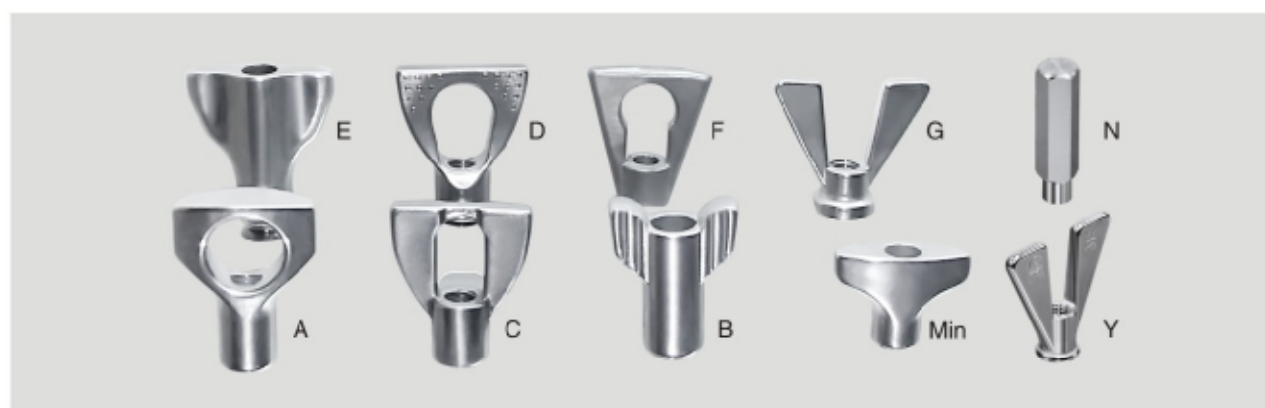
SIZE		尺寸	
		D	L
1"-1.5"	DN10-DN40	45	167
2"-2.5"	DN50	68	167
/	DN65	106	167
3"-4"	DN80-DN100	156	213
/	DN125-DN150	156	213

卡箍系列 Clamp series



各种卡箍螺母 All kinds of clamp nut

适用于所有的卡箍 Suitable for all clamps



MINI - 单销卡箍-(推荐型)
MINI/Single Pin Clamp(Recommended)

适用于Suitable for: 3A/ISO/IDF/BS/BPE/AS/DIN

代码 Cargo code : F040241



SIZE		卡盘	304	
			单重(g)	
1/2-3/4"	DN10-20	25.2	130	
1/2-3/4"	DN10-20	34	135	

单销卡箍-A型(推荐型)
Single Pin Clamp/A Type(Recommended)

适用于Suitable for: 3A/ISO/IDF/BS/BPE/AS/DIN

代码 Cargo code : F040242



SIZE		卡盘	中型(g)-304	
			单重(g)	
1"-1.5"	DN25-40	50.5	195	
2"	DN50	64	225	
2.5"	-	77.5	270	
3"	DN65	91	308	
3.5"	DN80	106	360	
4"	DN100	119	410	
4.5"	-	130	505	

螺母可任意选择, 注意“E型”螺母需要加价。

单销卡箍-B型(选型) Single Pin Clamp/B Type(Option)

适用于Suitable for: 3A/ISO/IDF/BS/BPE/AS/DIN

代码 Cargo code : F040243



SIZE		卡盘	中型(g)-304		重型(g)-304	
			单重(g)		单重(g)	
1"-1.5"	DN25-40	50.5	200.0		225	
2"	DN50	64	245.0		270	
2.5"	-	77.5	285.0		300	
3"	DN65	91	290.0		318	
3.5"	DN80	106	372.0		410	
4"	DN100	119	385.0		445	
4.5"	-	130			505	
5"	DN125	145			805	
5.5"	DN125	155			750	
6"	DN150	166.7			870	
6.5"	DN150	183			890	
8"	DN200	217			1200	
8.5"	-	240			1400	
10"	DN250	268			2150	
12"	DN300	319			2300	

螺母可任意选择, 注意“E型”螺母需要加价。

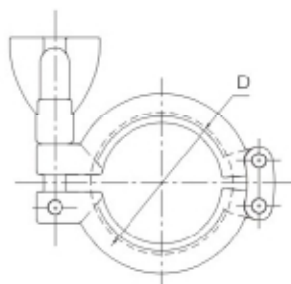
卡箍系列

Clamp series

双销卡箍-A型(推荐型) Double Pin Clamp/A Type(Recommended)

适用于Suitable for: 3A/ISO/IDF/BS/BPE/AS/DIN

代码 Cargo code : F040251



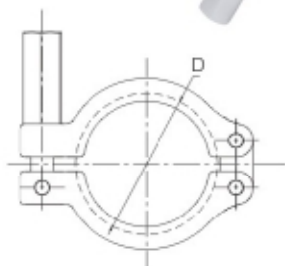
SIZE		卡盘	304
			单重(g)
1"-1.5"	DN25-40	50.5	218
2"	DN50	64	272
2.5"	-	77.5	302
3"	DN65	91	333
3.5"	DN80	106	370
4"	DN100	119	428
4.5"	-	130	446
5"	DN125	145	580
5.5"	DN125	155	775
6"	DN150	166.7	920
6.5"	DN150	183	980
8"	DN200	217	1223
10"	DN250	268	1820
12"	Dn300	319	-

螺母可任意选择, 注意“E型”螺母需要加价。

双销卡箍-B型(选型) Double Pin Clamp/B Type(Option)

适用于Suitable for: 3A/ISO/IDF/BS/BPE/AS/DIN

代码 Cargo code : F040252



SIZE		卡盘	304
			单重(g)
1"-1.5"	DN25-40	50.5	250
2"	DN50	64	350
2.5"	-	77.5	384
3"	DN65	91	420
3.5"	DN80	106	475
4"	DN100	119	500
4.5"	-	130	640
5"	DN125	145	800
6"	DN150	166.7	1200
6.5"	DN150	183	1290
8"	DN200	217	1550

螺母可任意选择, 注意“E型”螺母需要加价。



双销卡箍-C型(选型) Double Pin Clamp/C Type(Option)

适用于Suitable for: 3A/ISO/IDF/BS/BPE/AS/DIN

代码 Cargo code : F040253



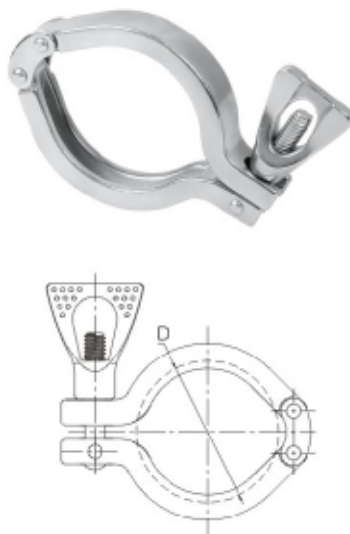
SIZE		卡盘	304
			单重(g)
1"-1.5"	DN25-40	50.5	247
2"	DN50	64	279
2.5"	-	77.5	325
3"	DN65	91	360
3.5"	DN80	106	400
4"	DN100	119	435
4.5"	-	130	452
5"	DN125	145	900
5.5"	DN125	155	1050
6"	DN150	166.7	1125
6.5"	DN150	183	1215
8"	DN200	217	1350
10"	DN250	258	1710
12"	DN300	319	2000

螺母可任意选择, 注意“E型”螺母需要加价。

双销卡箍-D型(选型) Double Pin Clamp/D Type(Option)

适用于Suitable for: 3A/ISO/IDF/BS/BPE/AS/DIN

代码 Cargo code : F040254



SIZE		卡盘	304
			单重(g)
1"-1.5"	DN25-40	50.5	247
2"	DN50	64	279
2.5"	-	77.5	325
3"	DN65	91	360
3.5"	DN80	106	400
4"	DN100	119	435
4.5"	-	130	452
5"	DN125	145	900
5.5"	DN125	155	1050
6"	DN150	166.7	1125
6.5"	DN150	183	1215
8"	DN200	217	1350
10"	DN250	258	1710
12"	DN300	319	2000

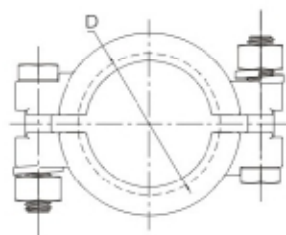
螺母可任意选择, 注意“E型”螺母需要加价。

卡箍系列 Clamp series

高压卡箍-(推荐型) High Pressure Clamp(Recommended)

适用于Suitable for: 3A/ISO/IDF/BS/BPE/AS/DIN

代码 Cargo code : F040261



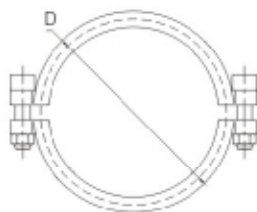
SIZE		卡盘	304
			单重(g)
1/2"-3/4"	DN10-20	25.2	135
1"-1.5"	DN25-40	50.5	355
2"	DN50	64	440
2.5"	-	77.5	490
3"	DN65	91	555
4"	DN100	119	660
5"	DN125	145	1010
6"	DN150	166.7	1090
6.5"	DN150	183	1285
8"	DN200	217	1550
8.5"	-	240	1560
10"	DN250	288	1910
12"	DN300	319	2430

价格已经包含了, 螺母, 螺栓, 垫片。

二片卡箍-(推荐型) 2-pcs Clamp(Recommended)

适用于Suitable for: 3A/ISO/IDF/BS/BPE/AS/DIN

代码 Cargo code : F040262



SIZE		卡盘	304
			单重(g)
1"-1.5"	DN25-40	50.5	210
2"	DN50	64	266
2.5"	-	77.5	315
3"	DN65	91	335
3.5"	DN80	106	400
4"	DN100	119	475
4.5"	-	130	570
5"	DN125	145	955
6"	DN150	166.7	990
6.5"	DN150	183	-
8"	DN200	217	1440
10"	DN250	288	2440
11"	-	305	-
12"	DN300	319	2880

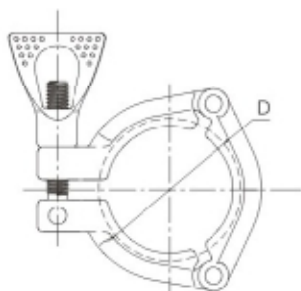
价格已经包含了, 螺母, 螺栓, 垫片。



三片卡箍-A型(推荐型) 3-pcs Clamp/A Type(Recommended)

适用于Suitable for: 3A/ISO/IDF/BS/BPE/AS/DIN

代码 Cargo code : F040263



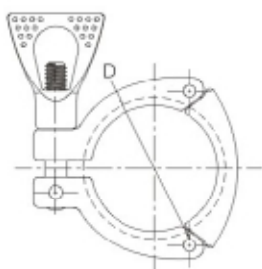
SIZE		卡盘	304
			单重(g)
1"-1.5"	DN25-40	50.5	210
2"	DN50	64	266
2.5"	-	77.5	315
3"	DN65	91	335
3.5"	DN80	106	400
4"	DN100	119	475
4.5"	-	130	570
5"	DN125	145	955
6"	DN150	166.7	990
6.5"	DN150	183	-
8"	DN200	217	1440
10"	DN250	268	2440
11"	-	305	-
12"	DN300	319	2880

螺母可任意选择, 注意“E型”螺母需要加价。

三片卡箍-B型 3-pcs Clamp/B Type

适用于Suitable for: 3A/ISO/IDF/BS/BPE/AS/DIN

代码 Cargo code : F040264



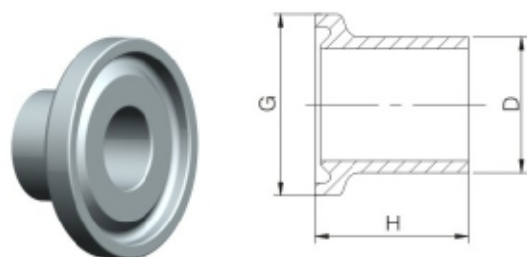
SIZE		卡盘
1"-1.5"	DN25-40	50.5
2"	DN50	64
2.5"	-	77.5
3"	DN65	91
3.5"	DN80	106
4"	DN100	119
4.5"	-	130
5"	DN125	145
6"	DN150	166.7
6.5"	DN150	183
8"	DN200	217
10"	DN250	268
11"	-	305
12"	DN300	319

螺母可任意选择, 注意“E型”螺母需要加价。

卡箍接头 Clamp connector

卡箍接头-A型(微型) Clamp Connector/A Type(MINI)

适用于Suitable for: 3A BS4825-3 AS1528



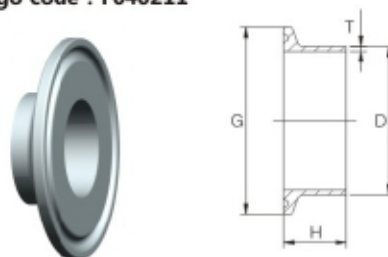
SIZE	尺寸			壁厚
	G	H	D	
货号代码 Cargo code : F040201				
1/2"	25.0	12.7	12.7	1.65
3/4"	25.0	12.7	19.1	1.65
DN6	25.0	12.7	8.0	
DN8	25.0	12.7	10.0	
10.2	25.0	12.7	10.2	1.60
13.5	25.0	12.7	13.5	1.60
17.2	25.0	12.7	17.2	1.60
货号代码 Cargo code : F040202				
1/2"	25.0	21.5	12.7	1.65
3/4"	25.0	21.5	19.1	1.65
货号代码 Cargo code : F040203				
1/2"	25.0	28.6	12.7	1.65
3/4"	25.0	28.6	19.1	1.65
10.2	25.0	28.6	10.2	1.60
13.5	25.0	28.6	13.5	1.60
17.2	25.0	28.6	17.2	1.60



卡箍接头-B型 Clamp Connector/B Type

适用于Suitable for: 3A BS4825-3 AS1528 (14WMP)

货号代码 Cargo code : F040211

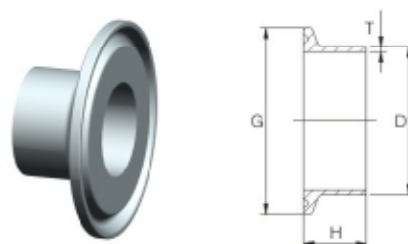


SIZE	尺寸			壁厚T
	G	H	D	
1/2"	50.50	12.70	12.70	1.65
3/4"	50.50	12.70	19.10	1.65
1"	50.50	12.70	25.40	1.65
1.5"	50.50	12.70	38.10	1.65
2"	64.00	12.70	50.80	1.65
2.5"	77.50	12.70	63.50	1.65
3"	91.00	12.70	76.20	1.65
4"	119.00	15.80	101.60	2.10
6"	167.00	22.20	152.40	2.77

卡箍接头-B型 Clamp Connector/B Type

适用于Suitable for: 3A BS4825-3 AS1528(14MMP)

货号代码 Cargo code : F040212

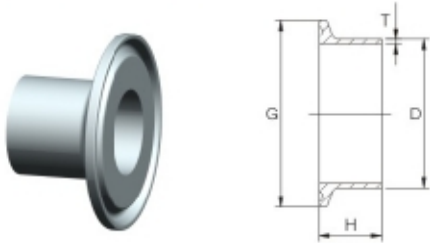


SIZE	尺寸			壁厚
	G	H	D	
1/2"	50.50	21.50	12.70	1.65
3/4"	50.50	21.50	19.10	1.65
1"	50.50	21.50	25.40	1.65
1.5"	50.50	21.50	38.10	1.65
2"	64.00	21.50	50.80	1.65
2.5"	77.50	21.50	63.50	1.65
3"	91.00	21.50	76.20	1.65
4"	119.00	21.50	101.60	2.10
6"	167.00	21.50	152.40	2.77

卡箍接头-B型 Clamp Connector/B Type

适用于Suitable for: 3A BS4825-3 AS1528 (14AMP)

货号代码 Cargo code : F040213

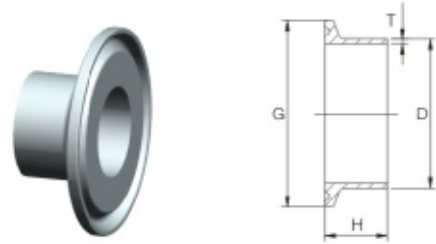


SIZE	尺寸			壁厚
	G	H	D	
1/2"	50.50	28.60	12.70	1.65
3/4"	50.50	28.60	19.10	1.65
1"	50.50	28.60	25.40	1.65
1.5"	50.50	28.60	38.10	1.65
2"	64.00	28.60	50.80	1.65
2.5"	77.50	28.60	63.50	1.65
3"	91.00	28.60	76.20	1.65
4"	119.00	28.60	101.60	2.10
6"	167.00	38.10	152.40	2.77

卡箍接头-B型 Clamp Connector/B Type

适用于Suitable for: ISO2852 SMS 3017

货号代码 Cargo code : F030212

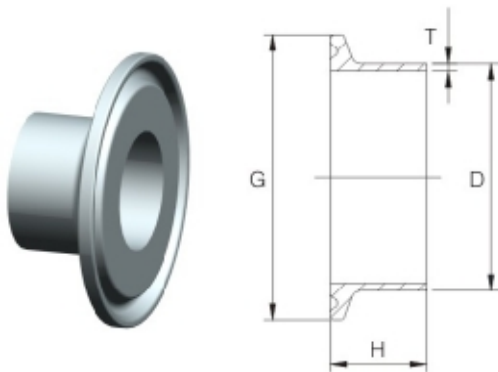


SIZE	尺寸			壁厚	
	G	H	D	推荐	选项
25.4	50.5	21.5	25.4	1.50	1.25
31.8	50.5	21.5	31.8	1.50	1.25
38.1	50.5	21.5	38.1	1.50	1.25
50.8	64.0	21.5	50.8	1.50	1.25
63.5	77.5	21.5	63.5	2.00	1.60
76.2	91.0	21.5	76.2	2.00	1.60
101.6	106.0	21.5	101.6	2.00	2.00

卡箍接头-推荐 Clamp Connector(Recommended)

适用于Suitable for: DIN32676-A (OD=DIN11850; DIN11866-A) -短型 (KK)

货号代码 Cargo code : F020212



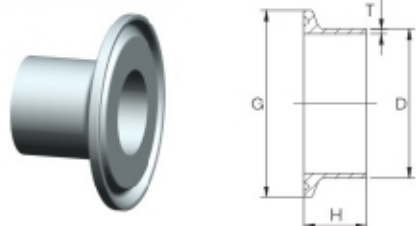
SIZE	尺寸		推荐	二系列	壁厚
	G	H			
DN10	34.0	18.0	12.0	13.0	1.5
DN15	34.0	18.0	18.0	19.0	1.5
DN20	34.0	18.0	22.0	23.0	1.5
DN25	50.5	21.5	28.0	29.0	1.5
DN32	50.5	21.5	34.0	35.0	1.5
DN40	50.5	21.5	40.0	41.0	1.5
DN50	64.0	21.5	52.0	53.0	1.5
DN65	91.0	28.0	70.0	-	2.00
DN80	106.0	28.0	85.0	-	2.00
DN100	119.0	28.0	104.0	-	2.00
DN125	145.0	28.0	129.0	-	2.00
DN125	155.0	28.0	129.0	-	2.00
DN150	167.0	28.0	154.0	-	2.00
DN150	183.0	28.0	154.0	-	2.00
DN200	217.7	28.0	204.0	-	2.00
DN200	233.5	28.0	204.0	-	2.00
DN250	268.0	28.0	254.0	-	2.00
DN300	319.0	28.0	304.0	-	2.00

卡箍接头 Clamp connector

卡箍接头 Clamp Connector

适用于Suitable for: DIN32676-A(OD=DIN11850-2;
DIN11866-A)-长型(KL)

货号代码 Cargo code : F020213

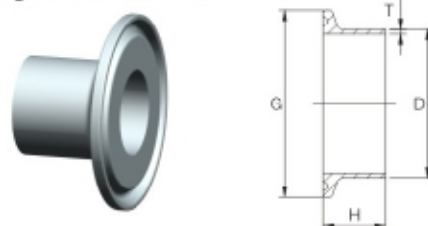


SIZE	尺寸		推荐	二系列	壁厚
	G	H			
DN10	34.0	28.6	12.0	13.0	1.5
DN15	34.0	28.6	18.0	19.0	1.5
DN20	34.0	28.6	22.0	23.0	1.5
DN25	50.5	36.0	28.0	29.0	1.5
DN32	50.5	36.0	34.0	35.0	1.5
DN40	50.5	36.0	40.0	41.0	1.5
DN50	64.0	36.0	52.0	53.0	1.5
DN65	91.0	48.0	70.0	-	2.00
DN80	106.0	48.0	85.0	-	2.00
DN100	119.0	48.0	104.0	-	2.00
DN125	145.0	66.0	129.0	-	2.00
DN125	155.0	66.0	129.0	-	2.00
DN150	167.0	66.0	154.0	-	2.00
DN150	183.0	66.0	154.0	-	2.00
DN200	217.7	66.0	204.0	-	2.00
DN200	233.5	66.0	204.0	-	2.00

卡箍接头 Clamp Connector

适用于Suitable for: DIN 32676-B
(OD=ISO 1127& DIN 11866-B) -短型(KK)

货号代码 Cargo code : F070212



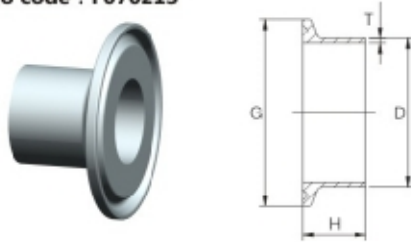
SIZE	尺寸			壁厚
	G	H	D	
21.3	50.5	21.5	21.3	1.60
26.9	50.5	21.5	26.9	2.00
33.7	50.5	21.5	33.7	2.00
42.4	64.0	21.5	42.4	2.00
45.0	64.0	21.5	45.0	2.00
48.3	64.0	21.5	48.3	2.00
57.0	77.5	21.5	57.0	2.00
60.3	77.5	28.0	60.3	2.00
76.1	91.0	28.0	76.1	2.00
88.9	106.0	28.0	88.9	2.30
108.0	119.0	28.0	108.0	2.00
114.3	130.0	28.0	114.3	2.30
133.0	155.0	28.0	133.0	3.00
139.7	155.0	28.0	139.7	2.60
159.0	183.0	28.0	159.0	3.00
168.3	183.0	28.0	168.3	2.60
219.1	233.5	28.0	219.1	2.60



卡箍接头 Clamp Connector

适用于Suitable for: DIN 32676-B
(OD=ISO 1127& DIN 11866-B)-长型(KL)

货号代码 Cargo code : F070213



SIZE	尺寸			壁厚
	G	H	D	
21.3	50.5	36	21.3	1.60
26.9	50.5		26.9	2.00
33.7	50.5		33.7	2.00
42.4	64.0		42.4	2.00
45.0	64.0		45.0	2.00
48.3	64.0		48.3	2.00
57.0	77.5		57.0	2.00
60.3	77.5		60.3	2.00
76.1	91.0		76.1	2.00
88.9	106.0		88.9	2.30
108.0	119.0	48	108.0	2.00
114.3	130.0		114.3	2.30
133.0	155.0		133.0	3.00
139.7	155.0		139.7	2.60
159.0	183.0		159.0	3.00
168.3	183.0		168.3	2.60
219.1	233.5		219.1	2.60

卡箍堵头-B型 Clamp Cap/A Type

适用于Suitable for: DIN SMS ISO BS 3A

货号代码 Cargo code : F020232



SIZE	卡盘G	长度H
17.2	DN10	34.00
-	DN15	34.00
-	DN20	34.00
21.3	-	50.50
26.9	-	50.50
33.7	DN25	1"
-	DN32	1.25"
-	DN40	1.5"
42.4	DN50	2"
45.0	-	64.00
48.3	-	64.00
57.0	-	77.50
60.3	-	77.50
76.1	DN65	3"
88.9	DN80	-
108.0	DN100	4"
114.3	-	130.00
133.0	DN125	-
139.7	DN125	-
-	DN150	6"
159.0	DN150	-
168.3	DN200	-
219.1	DN200	-
-	DN250	-
-	DN300	-

卡箍堵头-A型 Clamp Cap/B Type

适用于Suitable for: DIN SMS ISO BS 3A

货号代码 Cargo code : F040231



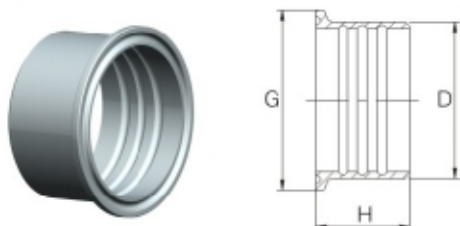
SIZE	卡盘G	长度H
10.2	DN6	1/2"
13.5	DN8	3/4"

卡箍接头 Clamp connector

膨胀式卡箍接头 Expanded Clamp Connector

适用于Suitable for: 3A BS4825-3 As1528

货号代码 Cargo code : F040214

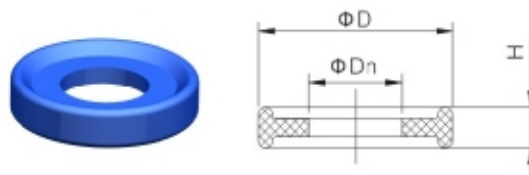


SIZE	尺寸		
	G	H	D
1'	50.50	19.10	29.50
1.5'	50.50	28.60	42.50
2'	64.00	33.30	55.70
2.5'	77.50	34.90	68.80
3'	91.00	36.50	82.00
4'	119.00	38.10	108.00

卡箍垫圈-A型 Clamp Gasket/A Type

适用于Suitable for: DIN SMS ISO BS 3A

货号代码 Cargo code : F040221

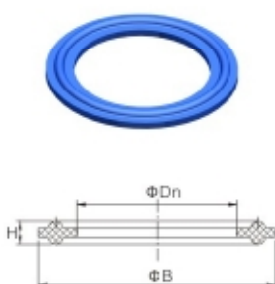


SIZE			D
10.2	DN6	1/2"	21.8
13.5	DN8	3/4"	21.8

卡箍垫圈-B型 Clamp Gasket/B Type

适用于Suitable for: ISO1127

货号代码 Cargo code : F070222

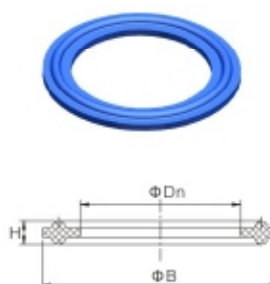


SIZE	卡盘B
17.2	34.00
21.3	50.50
26.9	50.50
33.7	50.50
42.4	64.00
45.0	64.00
48.3	64.00
57.0	77.50
60.3	77.50
76.1	91.00
88.9	106.00
108.0	119.00
114.3	130.00
133.0	145.00
139.7	155.00
159.0	183.00
168.3	217.70
219.1	233.50

卡箍垫圈-B型 Clamp Gasket/B Type

适用于Suitable for: DIN

货号代码 Cargo code : F020222

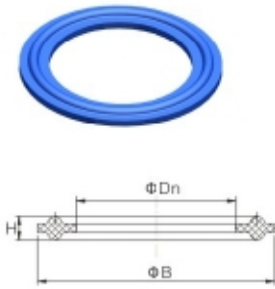


SIZE	卡盘B
DN10	34.00
DN15	34.00
DN20	34.00
DN25	50.50
DN32	50.50
DN40	50.50
DN50	64.00
DN65	91.00
DN80	106.00
DN100	119.00
DN125	145.00
DN125	155.00
DN150	167.00
DN150	183.00
DN200	217.70
DN200	233.50
DN250	268.00
DN300	319.00

卡箍垫圈-B型 Clamp Gasket/B Type

适用于Suitable for: SMS BS 3A ISO

货号代码 Cargo code :
F040222

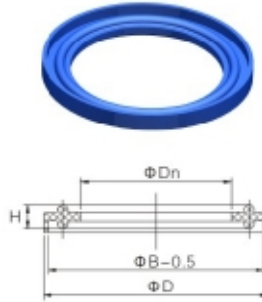


SIZE	卡盘B
1"	50.50
1.25"	50.50
1.5"	50.50
2"	64.00
2.5"	77.50
3"	91.00
4"	119.00
6"	167.00

卡箍垫圈-L型(带翻边) Clamp Gasket/L Type (Lip)

适用于Suitable for: SMS BS 3A ISO

货号代码 Cargo code :
F040223

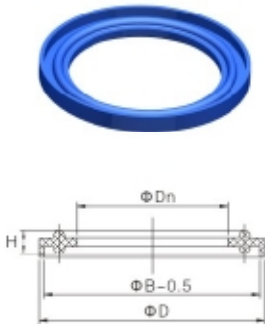


SIZE	卡盘B
1"	50.50
1.25"	50.50
1.5"	50.50
2"	64.00
2.5"	77.50
3"	91.00
4"	119.00
6"	167.00

卡箍垫圈-L型(带翻边) Clamp Gasket/L Type (Lip)

适用于Suitable for: ISO1127

货号代码 Cargo code :
F070223

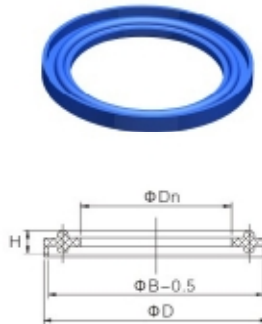


SIZE	卡盘B
17.2	34.00
21.3	50.50
26.9	50.50
33.7	50.50
42.4	64.00
45.0	64.00
48.3	64.00
57.0	77.50
60.3	77.50
76.1	91.00
88.9	106.00
108.0	119.00
114.3	130.00
133.0	145.00
139.7	155.00
159.0	183.00
168.3	217.70
219.1	233.50

卡箍垫圈-L型(带翻边) Clamp Gasket/L Type (Lip)

适用于Suitable for: DIN

货号代码 Cargo code :
F020222



SIZE	卡盘B
DN10	34.00
DN15	34.00
DN20	34.00
DN25	50.50
DN32	50.50
DN40	50.50
DN50	64.00
DN65	91.00
DN80	106.00
DN100	119.00
DN125	145.00
DN125	155.00
DN150	167.00
DN150	183.00
DN200	217.70
DN200	233.50
DN250	268.00
DN300	319.00

I-LINE 卡箍接头

I-LINE Ferrule



I-line 系列卡箍管件是食品、酿酒、油品、水处理等工程较为理想的选择，该系列卡箍管件优势在于压力高，抗震动强，能承受较高温度，拆装简单方便，并且达到卫生要求。

规格：1"-8"

材质：ASTM T304/316L

表面处理：180Grit/300Grit

垫圈可选择：EPDM FPM NBR 常用垫圈Silicon

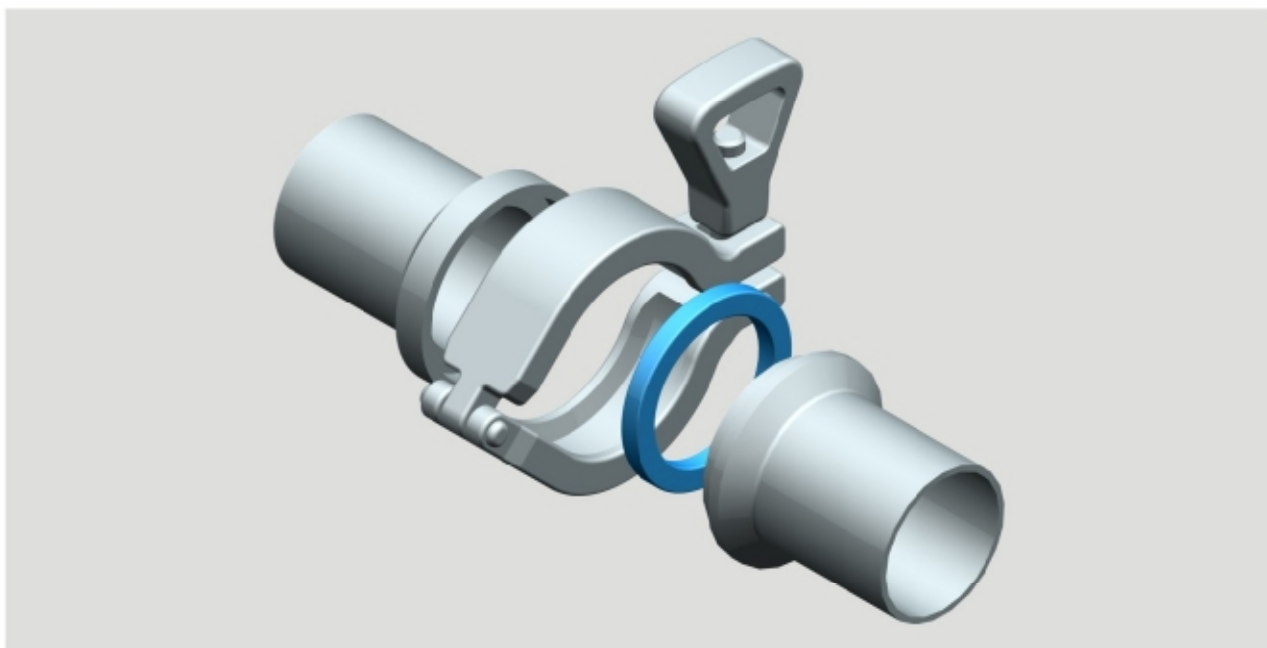
I-Line Fitting series is a relative ideal option for projects of food, brewing, oils and water-treatment. The advantage is strong resistant vibration and is capable of bearing high pressure and temperature. It is not only easy to both installed and disassembled but also meets hygienic requirements.

Specification: 1"-8"

Material: ASTM T304/316L

Finish: 80Grit/300Grit

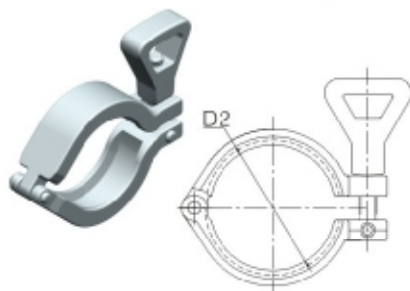
Options for Gasket: EPDM FPM NBR Silicon (standard)



卡箍 Clamp

适用于Suitable for: I-LINE

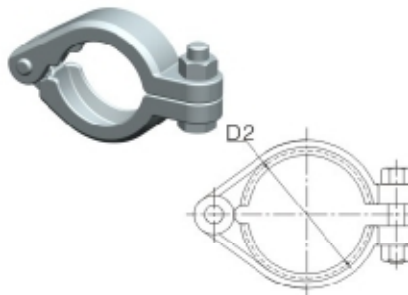
货号代码 Cargo code : F100241



卡箍13IS

SIZE	尺寸 D2
1'-1.5'	50.7
2"	67.1
2.5"	84.0
3"	98.3
4"	123.7
6"	190.5

货号代码 Cargo code : F100242



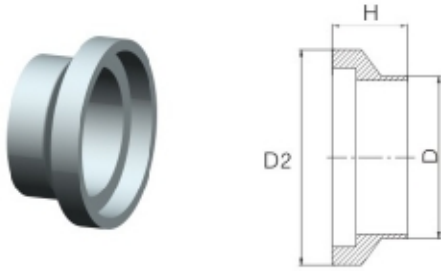
卡箍13I

SIZE	尺寸 D2
1'-1.5'	50.7
2"	67.1
2.5"	84.0
3"	98.3
4"	123.7
6"	190.5

卡箍接头(15WI) Ferrule

适用于Suitable for: I-LINE

货号代码 Cargo code : F100201

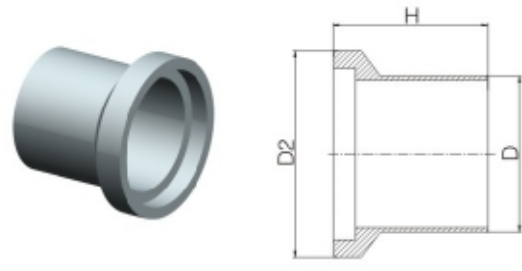


SIZE	尺寸		
	D	D2	H
1"	25.4	50.7	19.8
1.5"	38.1	50.7	23.8
2"	50.8	67.1	26.2
2.5"	63.5	84.0	29.4
3"	76.2	98.3	30.9
4"	101.6	123.7	34.1
6"	152.4	190.5	28.6

卡箍接头(15WLI) Ferrule

适用于Suitable for: I-LINE

货号代码 Cargo code : F100202

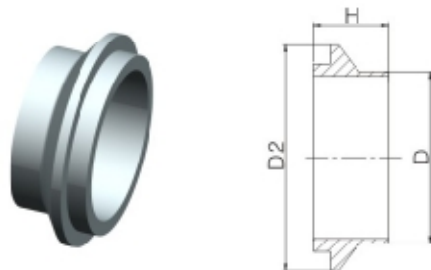


SIZE	尺寸		
	D	D2	H
1"	25.4	50.7	44.4
1.5"	38.1	50.7	51.6
2"	50.8	67.1	58.7
2.5"	63.5	84.0	63.5
3"	76.2	98.3	68.3
4"	101.6	123.7	76.2

卡箍接头(14WI) Ferrule

适用于Suitable for: I-LINE

货号代码 Cargo code : F100211

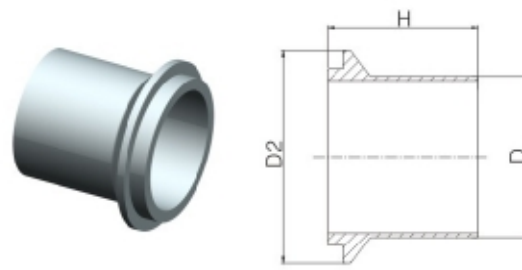


SIZE	尺寸		
	D	D2	H
1"	25.4	50.7	19.8
1.5"	38.1	50.7	23.8
2"	50.8	67.1	26.2
2.5"	63.5	84.0	29.4
3"	76.2	98.3	30.9
4"	101.6	123.7	34.1
6"	152.4	190.5	28.6

卡箍接头(14WLI) Ferrule

适用于Suitable for: I-LINE

货号代码 Cargo code : F100212



SIZE	尺寸		
	D	D2	H
1"	25.4	50.7	44.4
1.5"	38.1	50.7	51.6
2"	50.8	67.1	58.7
2.5"	63.5	84.0	63.5
3"	76.2	98.3	68.3
4"	101.6	123.7	76.2

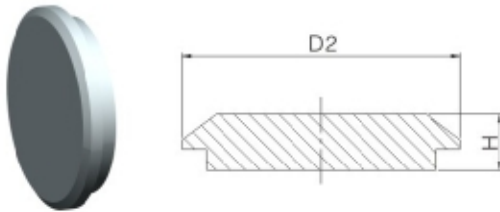
I-LINE 卡箍接头

I-LINE Clamp connector

卡箍接头(14WI-CAP) Ferrule

适用于Suitable for: I-LINE

货号代码 Cargo code : F100231

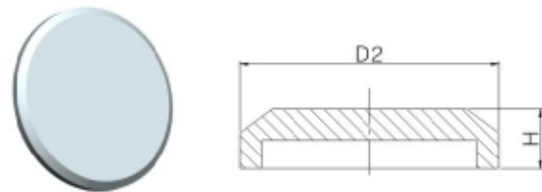


SIZE	尺寸	
	D2	H
1"	50.7	9.7
1.5"	50.7	9.7
2"	67.1	11.8
2.5"	84.0	15.5
3"	98.3	16.1
4"	123.7	16.1

卡箍堵头 (15WI-CAP) Clamp Cap

适用于Suitable for: I-LINE

货号代码 Cargo code : F100232

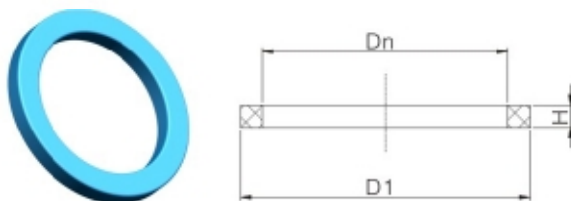


SIZE	尺寸	
	D2	H
1"	50.7	12.8
1.5"	50.7	12.8
2"	67.1	17.7
2.5"	84.0	18.8
3"	98.3	19.4
4"	123.7	19.4

I-LINE垫圈 I-LINE Gasket

适用于Suitable for: I-LINE

货号代码 Cargo code : F100221



SIZE	尺寸		
	D1	Dn	H
1"	31.8	22.4	2.5
1.5"	44.5	35.1	2.5
2"	57.2	47.8	2.5
2.5"	69.9	60.5	2.5
3"	84.1	73.4	2.5
4"	109.5	97.9	2.5
6"	158.9	147.4	2.5



卡箍/螺纹/对焊, 接头系列

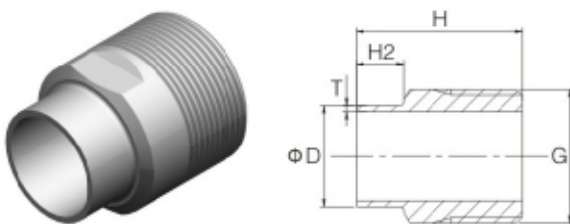
Clamp/ Thread/ Weld Connector Series



单焊接单外螺纹接头-Inch Welded/ Male Adapter - Inch

适用于Suitable for: 3A,AS,BS,SMS,ISO

货号代码 Cargo code : F040801

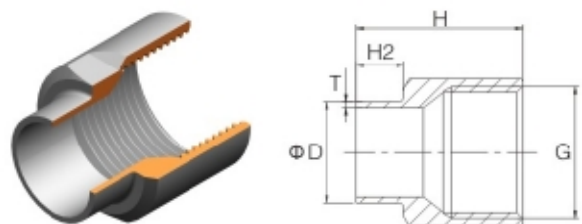


SIZE	尺寸			G (BSP/BSPT /NPT)
	D	H	H2	
0.5"X0.5"	12.7	38	12	1/2"
0.5"X0.75"	12.7	38	12	3/4"
0.75"X0.75"	19	38	12	3/4"
0.5"X1"	12.7	42	12	1"
0.75"X1"	19	42	12	1"
1"X1"	25.4	42	12	1"
0.75"X1.25"	19	44	12	1 1/4"
1"X1.25"	25.4	44	12	1 1/4"
1.25"X1.25"	31.8	44	12	1 1/4"
0.75"X1.5"	19	44	12	1 1/2"
1"X1.5"	25.4	44	12	1 1/2"
1.25"X1.5"	31.8	44	12	1 1/2"
1.5"X1.5"	38.1	44	12	1 1/2"
1"X2"	25.4	46	12	2"
1.25"X2"	31.8	46	12	2"
1.5"X2"	38.1	46	12	2"
2"X2"	50.8	46	12	2"
1"X2.5"	25.4	55	12	2 1/2"
1.5"X2.5"	38.1	55	12	2 1/2"
2"X2.5"	50.8	55	12	2 1/2"
2.5"X2.5"	63.5	55	12	2 1/2"
1"X3"	25.4	55	12	3"
1.5"X3"	38.1	55	12	3"
2"X3"	50.8	55	12	3"
2.5"X3"	63.5	55	12	3"
3"X3"	76.2	55	12	3"
3.5"X3.5"	89	60	15	3 1/2"
4"X4"	101.6	60	15	4"

单焊接单内螺纹接头-Inch Welded/ Female Adapter - Inch

适用于Suitable for: 3A,AS,BS,SMS,ISO

货号代码 Cargo code : F040802



SIZE	尺寸			G (BSP/BSPT /NPT)
	D	H	H2	
0.5"X0.5"	12.7	38	12	1/2"
0.5"X0.75"	12.7	38	12	3/4"
0.75"X0.75"	19	38	12	3/4"
0.5"X1"	12.7	42	12	1"
0.75"X1"	19	42	12	1"
1"X1"	25.4	42	12	1"
0.75"X1.25"	19	44	12	1 1/4"
1"X1.25"	25.4	44	12	1 1/4"
1.25"X1.25"	31.8	44	12	1 1/4"
0.75"X1.5"	19	44	12	1 1/2"
1"X1.5"	25.4	44	12	1 1/2"
1.25"X1.5"	31.8	44	12	1 1/2"
1.5"X1.5"	38.1	44	12	1 1/2"
1"X2"	25.4	46	12	2"
1.25"X2"	31.8	46	12	2"
1.5"X2"	38.1	46	12	2"
2"X2"	50.8	46	12	2"
1"X2.5"	25.4	55	12	2 1/2"
1.5"X2.5"	38.1	55	12	2 1/2"
2"X2.5"	50.8	55	12	2 1/2"
2.5"X2.5"	63.5	55	12	2 1/2"
1"X3"	25.4	55	12	3"
1.5"X3"	38.1	55	12	3"
2"X3"	50.8	55	12	3"
2.5"X3"	63.5	55	12	3"
3"X3"	76.2	55	12	3"
3.5"X3.5"	89	60	15	3 1/2"
4"X4"	101.6	60	15	4"

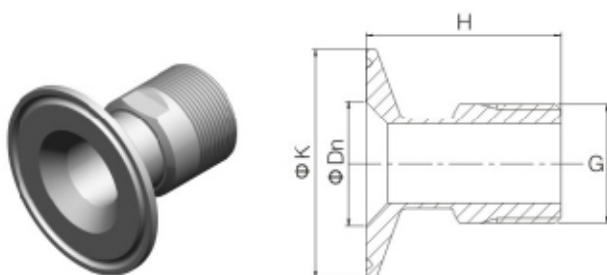
卡箍/螺纹/对焊, 接头系列

Clamp/ Thread/ Weld Connector Series

单卡箍单外螺纹接头-Inch Clamped / Male Adapter - Inch

适用于Suitable for: 3A,AS,BS,SMS,ISO

货号代码 Cargo code : F040803

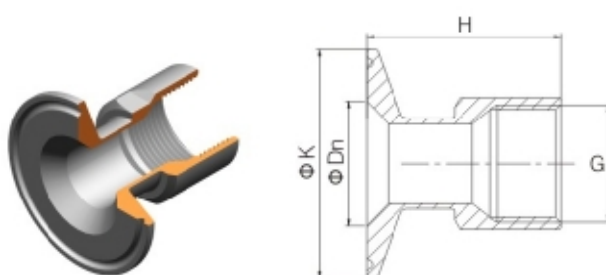


SIZE	尺寸			G (BSP/BSPT /NPT)
	Dn	K	H	
0.5"X0.5"	9.4	25	50.7	1/2"
0.75"X0.5"	15.7	25	50.7	1/2"
0.75"X0.75"	15.7	25	50.7	3/4"
1"X0.5"	22.1	50.5	50.7	1/2"
1"X0.75"	22.1	50.5	50.7	3/4"
1"X1"	22.1	50.5	54.7	1"
1.25"X0.75"	28.8	50.5	50.7	3/4"
1.25"X1"	28.8	50.5	54.7	1"
1.25"X1.25"	28.8	50.5	56.7	1 1/4"
1.5"X0.75"	34.8	50.5	50.7	3/4"
1.5"X1"	34.8	50.5	54.7	1"
1.5"X1.25"	34.8	50.5	56.7	1 1/4"
1.5"X1.5"	34.8	50.5	56.7	1 1/2"
2" X1"	47.5	64	54.7	1"
2" X1.25"	47.5	64	56.7	1 1/4"
2" X1.5"	47.5	64	56.7	1 1/2"
2" X2"	47.5	64	58.7	2"
2.5"X1"	60.2	77.5	54.7	1"
2.5"X1.5"	60.2	77.5	56.7	1 1/2"
2.5"X2"	60.2	77.5	58.7	2"
2.5"X2.5"	60.2	77.5	67.7	2 1/2"
3"X1"	72.9	91	54.7	1"
3"X1.5"	72.9	91	56.7	1 1/2"
3"X2"	72.9	91	58.7	2"
3"X2.5"	72.9	91	67.7	2 1/2"
3"X3"	72.9	91	67.7	3"
4"X4"	97.4	119	75.8	4"

单卡箍单内螺纹接头-Inch Clamped /Female Adapter - Inch

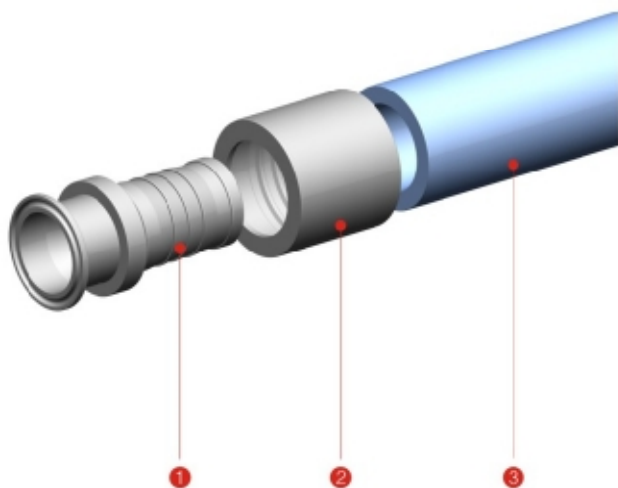
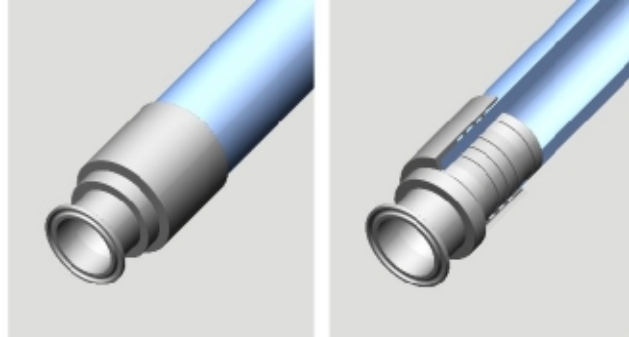
适用于Suitable for: 3A,AS,BS,SMS,ISO

货号代码 Cargo code : F040804



SIZE	尺寸			G (BSP/BSPT /NPT)
	Dn	K	H	
0.5"X0.5"	9.4	25	50.7	1/2"
0.75"X0.5"	15.7	25	50.7	1/2"
0.75"X0.75"	15.7	25	50.7	3/4"
1"X0.5"	22.1	50.5	50.7	1/2"
1"X0.75"	22.1	50.5	50.7	3/4"
1"X1"	22.1	50.5	54.7	1"
1.25"X0.75"	28.8	50.5	50.7	3/4"
1.25"X1"	28.8	50.5	54.7	1"
1.25"X1.25"	28.8	50.5	56.7	1 1/4"
1.5"X0.75"	34.8	50.5	50.7	3/4"
1.5"X1"	34.8	50.5	54.7	1"
1.5"X1.25"	34.8	50.5	56.7	1 1/4"
1.5"X1.5"	34.8	50.5	56.7	1 1/2"
2" X1"	47.5	64	54.7	1"
2" X1.25"	47.5	64	56.7	1 1/4"
2" X1.5"	47.5	64	56.7	1 1/2"
2" X2"	47.5	64	58.7	2"
2.5"X1"	60.2	77.5	54.7	1"
2.5"X1.5"	60.2	77.5	56.7	1 1/2"
2.5"X2"	60.2	77.5	58.7	2"
2.5"X2.5"	60.2	77.5	67.7	2 1/2"
3"X1"	72.9	91	54.7	1"
3"X1.5"	72.9	91	56.7	1 1/2"
3"X2"	72.9	91	58.7	2"
3"X2.5"	72.9	91	67.7	2 1/2"
3"X3"	72.9	91	67.7	3"
4"X4"	97.4	119	75.8	4"

卡压式软管接头 Jam-on hose coupler



编号 No.	名称 Product name	材质 Material	材质 Material
1#	卡箍式卡压型软管接头 Clamped Jam-on Hose Coupler	316L	304
2#	卡压式软管接头-外套管 Outer Sleeve for Jam-on Coupler	316L	304
3#	软管 Hose		

注意：卡压型软管接头，需使用软管接头与外套管配套使用
Note: Hose coupler needs be matched with outer sleeve.



货号代码 Code : F040512

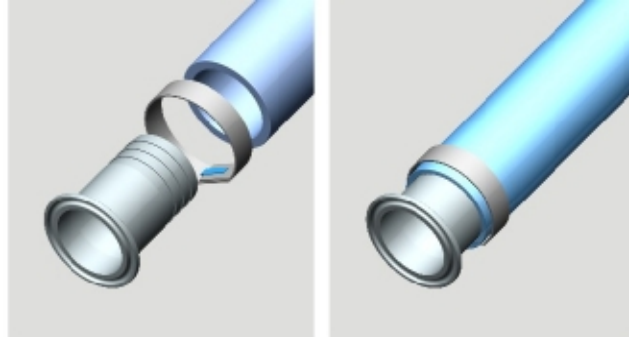
货号代码 Code : F040515



货号代码 Cargo code : F040513



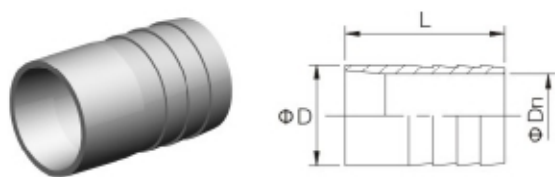
卡压式软管接头 Jam-on hose coupler



焊接式软管接头-Inch Weld hose coupler -Inch

适用于Suitable for: 3A, AS, BS, SMS, ISO

货号代码 Cargo code : F010501

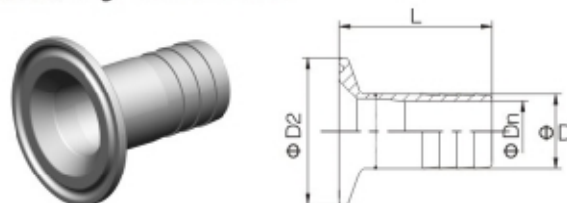


SIZE	尺寸		
	D	Dn	L
1/4"	10	5	30
3/8"	11	6.2	30
1/2"	13.7	9.5	30
3/4"	21.4	15.8	30
1"	25.4	20.6	40
1 1/4"	31.8	26.8	40
1 1/2"	38.1	33.2	40
2"	50.8	46	50
2 1/2"	63.5	58.7	50
3"	76.2	70	70
4"	101.6	96	80

异径卡箍式软管接头-Inch Eccentric Clamp Hose Coupler -Inch

适用于Suitable for: 3A, AS, BS, SMS, ISO

货号代码 Cargo code : F010502

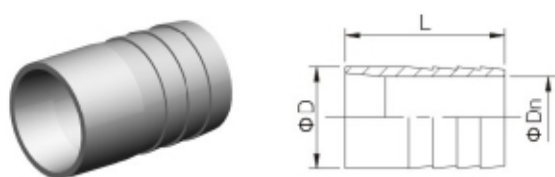


SIZE	尺寸				
	D	Dn	L	D2	D3
1.5"X0.5"	13.7	9.5	42.7	50.5	35.1
1.5"X0.75"	21.4	15.8	42.7	50.5	35.1
1.5"X1"	25.4	20.6	52.7	50.5	35.1
2"X0.5"	13.7	9.5	42.7	64	47.8
2"X0.75"	21.4	15.8	42.7	64	47.8
2"X1"	25.4	20.6	52.7	64	47.8
2"X1.5"	38.1	33.2	52.7	64	47.8

焊接式软管接头-DIN Weld hose coupler -DIN

适用于Suitable for: DIN

货号代码 Cargo code : F020501

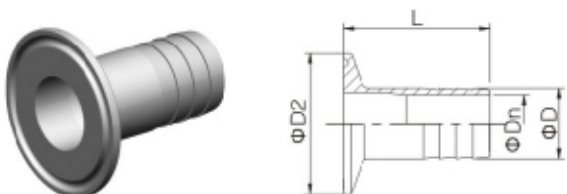


SIZE	尺寸		
	D	Dn	L
DN15	18	14	30
DN20	22	18	40
DN25	28	24	40
DN32	34	30	40
DN40	40	35	40
DN50	52	47	50
DN65	70	64	70
DN80	85	79	70
DN100	104	98	80

卡箍式软管接头-Inch Clamp Hose Coupler -Inch

适用于Suitable for: 3A, AS, BS, SMS, ISO

货号代码 Cargo code : F010503

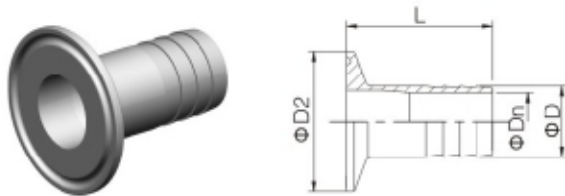


SIZE	尺寸			
	D	Dn	L	D2
1/4"	10	5	42.7	25.4
3/8"	11	6.2	42.7	25.4
1/2"	13.7	9.5	42.7	25.4
3/4"	21.4	15.8	42.7	25.4
1"	25.4	20.6	52.7	50.5
1 1/4"	31.8	26.8	52.7	50.5
1 1/2"	38.1	33.2	52.7	50.5
2"	50.8	46	62.7	64
2 1/2"	63.5	58.7	62.7	77.5
3"	76.2	70	82.7	91
4"	101.6	96	95.8	119

卡箍式软管接头-DIN
Clamp Hose Coupler -DIN

适用于Suitable for: DIN

货号代码 Cargo code : F020503

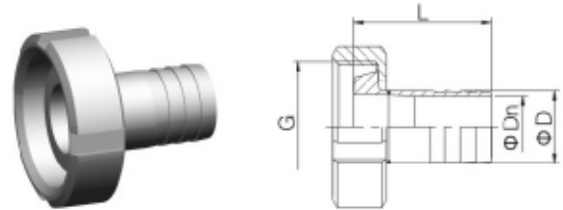


SIZE	尺寸			
	D	Dn	L	D2
DN20	22	18	58	34
DN25	28	24	61.5	50.5
DN32	34	30	61.5	50.5
DN40	40	35	61.5	50.5
DN50	52	47	71.5	64
DN65	70	64	98	91
DN80	85	79	98	106
DN100	104	98	108	119

螺母式软管接头-DIN
Nut Hose Coupler -DIN

适用于Suitable for: DIN

货号代码 Cargo code : F020505

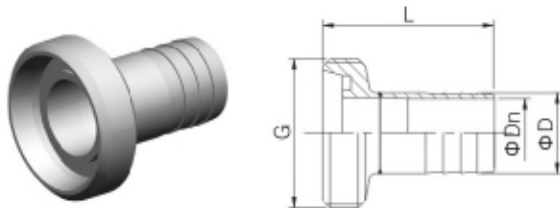


SIZE	尺寸			
	D	Dn	L	G
DN25	28	24	54	Rd52X1/6
DN32	34	30	54	Rd58X1/6
DN40	40	35	56	Rd65X1/6
DN50	52	47	67	Rd78X1/6
DN65	70	64	88	Rd95X1/6
DN80	85	79	90	Rd110X1/4
DN100	104	98	102	Rd130X1/4

螺纹式软管接头-DIN
Thread Hose Coupler -IDF

适用于Suitable for: DIN

货号代码 Cargo code : F020506

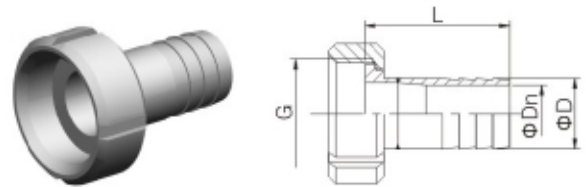


SIZE	尺寸			
	D	Dn	L	G
DN25	28	24	60	Rd52X1/6
DN32	34	30	60	Rd58X1/6
DN40	40	35	60	Rd65X1/6
DN50	52	47	71	Rd78X1/6
DN65	70	64	93	Rd95X1/6
DN80	85	79	95	Rd110X1/4
DN100	104	98	108	Rd130X1/4

螺母式软管接头-SMS
Nut Hose Coupler -SMS

适用于Suitable for: SMS

货号代码 Cargo code : F030505



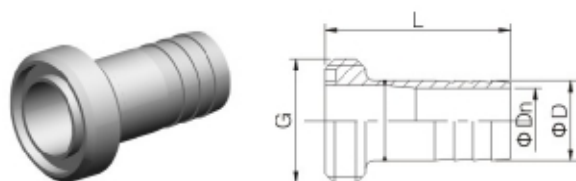
SIZE	尺寸			
	D	Dn	L	G
25	25.4	20.6	52	Rd40X1/6
32	31.8	26.6	52	Rd48X1/6
38	38.1	33.2	53	Rd60X1/6
51	50.8	46	63	Rd70X1/6
63	63.5	58.7	64	Rd85X1/6
76	76.2	70	84	Rd98X1/6
102	101.6	96	97	Rd132X1/6

卡压式软管接头 Jam-on hose coupler

螺纹式软管接头-SMS Thread Hose Coupler -SMS

适用于Suitable for: SMS

货号代码 Cargo code : F030506

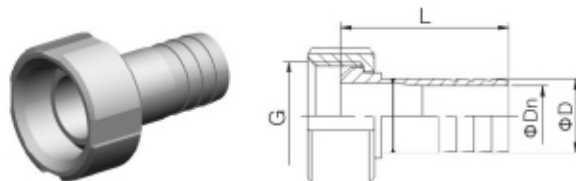


SIZE	尺寸			
	D	Dn	L	G
25	25.4	20.6	59	Rd40X1/6
32	31.8	26.8	58	Rd48X1/6
38	38.1	33.2	60	Rd60X1/6
51	50.8	46	70	Rd70X1/6
63	63.5	58.7	74	Rd85X1/6
76	76.2	70	95	Rd98X1/6
102	101.6	96	107	Rd132X1/6

螺母式软管接头-3A Nut Hose Coupler -3A

适用于Suitable for: 3A

货号代码 Cargo code : F040505

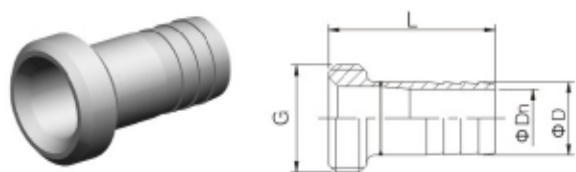


SIZE	尺寸			
	D	Dn	L	G(ACME)
1"	25.4	20.6	58.3	38.02X1/8
1.5"	38.1	33.2	58.3	51.54X1/8
2"	50.8	46	69.1	65.05X1/8
2.5"	63.5	58.7	72.3	78.56X1/8
3"	76.2	70	93.1	92.08X1/8
4"	101.6	96	106.2	120.14X1/6

螺纹式软管接头-3A Thread Hose Coupler -3A

适用于Suitable for: 3A

货号代码 Cargo code : F040506

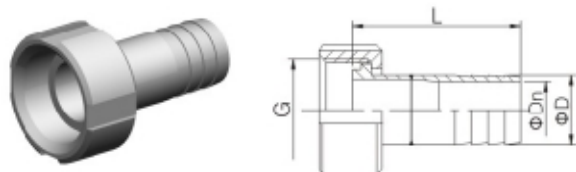


SIZE	尺寸			
	D	Dn	L	G(ACME)
1"	25.4	20.6	58.3	38.02X1/8
1.5"	38.1	33.2	58.3	51.54X1/8
2"	50.8	46	69.1	65.05X1/8
2.5"	63.5	58.7	72.3	78.56X1/8
3"	76.2	70	93.1	92.08X1/8
4"	101.6	96	106.2	120.14X1/6

螺母式软管接头-ISO/IDF Nut Hose Coupler -ISO/IDF

适用于Suitable for: ISO/IDF

货号代码 Cargo code : F050505

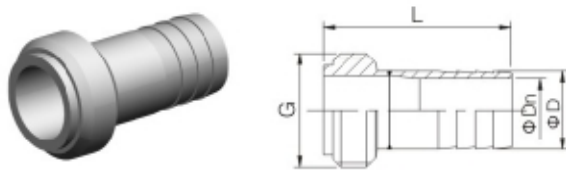


SIZE	尺寸			
	D	Dn	L	G(ACME)
1"	25.4	20.6	61.5	38.3X1/8
1.5"	38.1	33.2	61.5	51.8X1/8
2"	50.8	46	71.5	65.3X1/8
2.5"	63.5	58.7	71.5	78.8X1/8
3"	76.2	70	91.5	92.3X1/8
4"(IDF)	101.6	96	110	127.2X1/6
4"(ISO)	101.6	96	101.5	119.4X1/8

螺纹式软管接头-ISO/IDF
Thread Hose Coupler -ISO/IDF

适用于Suitable for: ISO/IDF

货号代码 Cargo code : F050506

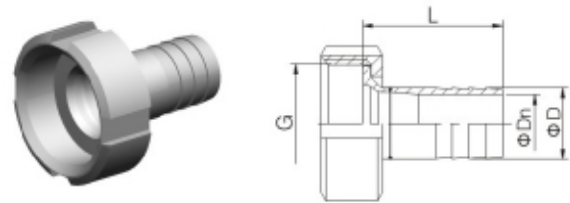


SIZE	尺寸			
	D	Dn	L	G(ACME)
1"	25.4	20.6	61.5	37.13X1/8
1.5"	38.1	33.2	61.5	50.65X1/8
2"	50.8	46	71.5	64.16X1/8
2.5"	63.5	58.7	71.5	77.7X1/8
3"	76.2	70	91.5	91.2X1/8
4"(IDF)	101.6	96	110	125.9X1/6
4"(ISO)	101.6	96	101.5	118.4X1/8

螺母式软管接头-RJT
Nut Hose Coupler -RJT

适用于Suitable for: RJT

货号代码 Cargo code : F110505

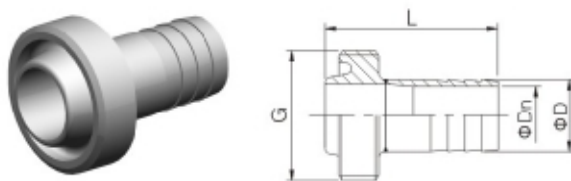


SIZE	尺寸			
	D	Dn	L	G(WHIT)
1"	25.4	20.6	50	45.7X1/8
1.5"	38.1	33.2	50	58.4X1/8
2"	50.8	46	60	72.7X1/6
2.5"	63.5	58.7	60	85.4X1/6
3"	76.2	70	80	98.1X1/6
4"	101.6	96	92.7	123.8X1/6

螺纹式软管接头-RJT
Thread Hose Coupler -RJT

适用于Suitable for: RJT

货号代码 Cargo code : F110505

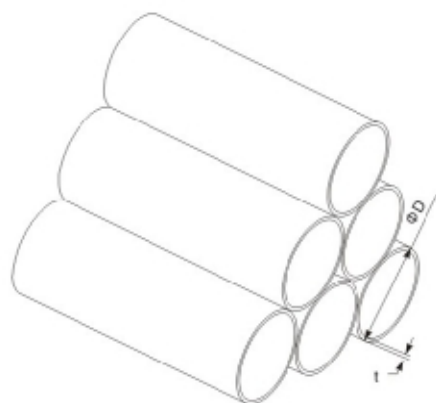


SIZE	尺寸			
	D	Dn	L	G(WHIT)
1"	25.4	20.6	67	45.7X1/8
1.5"	38.1	33.2	67	58.4X1/8
2"	50.8	46	77	72.7X1/6
2.5"	63.5	58.7	77	85.4X1/8
3"	76.2	70	97	98.1X1/6
4"	101.6	96	107	123.8X1/6



卫生钢管 Sanitary tube

钢管 Tube



ISO/IDF			SMS-DS				3A			ISO2037(ISO2851)	
SIZE	D	t(mm)	SIZE	D	t(mm)		SIZE	D	t(mm)	SIZE	t(mm)
					1	2					
1/2"	12.7	1.5/1	25	25	1.25	1.5	1/2"	12.7	1.65	12	1.0
3/4"	19.1	1.5/1	32	32	1.25	1.5	3/4"	19	1.65	12.7	1.0
1"	25.4	1.5/1.2	38	38	1.25	1.5	1"	25.4	1.65	17.2	1.0
1 1/4"	31.8	1.5/1.2	51	51	1.25	1.5	1 1/2"	38.1	1.65	21.3	1.0
1 1/2"	38.1	1.5/1.2	63.5	63.5	1.5	2.0	2"	50.8	1.65	25	1.2; 1.6
45	45	2.0	76	76	1.6	2.0	2 1/2"	63.5	1.65	33.7	1.2; 1.6
48	48	1.5	89	89	2.0	2.0	3"	76.2	1.65	38	1.2; 1.6
2"	50.8	1.5	101.6	101.6	2.0	2.0	4"	101.6	2.1	40	1.2; 1.6
57	57	2.0					6"	152.4	2.8	51	1.2; 1.6
2 1/2"	63.5	2.0					8"	203.2	2.8	63.5	1.6
3"	76.2	2.0					10"	254	3.4	70	1.6
3 1/2"	89	2.0					12"	305	3.4	76.1	1.6
4"	101.6	2.0								88.9	2.0
108	108	2.0								101.6	2.0
114.3	114.3	2.0								114.3	2.0
133	133	3.0								139.7	2.0
159	159	3.0								138.3	2.6
204	204	2.0								219.1	2.6

DIN11850				BS4825				ISO1127			JIS G3447			
SIZE	Dxt	Dxt	Dxt	SIZE	D	t(mm)		SIZE	D	t(mm)	SIZE	D	t(mm)	
						1	2							
DN10	12x1.0	13x1.5	14x2.0	12x1.5	12.7	12.7	1.2	1.2	26.9	26.9	1.6	1"	25.4	1.2
DN15	18x1.0	19x1.5	20x2.0	18x1.5	15.88	15.88	1.2	1.2	33.7	33.7	2.0	1 1/4"	31.8	1.2
DN20	22x1.0	23x1.5	24x2.0	22x1.5	19.05	19.05	1.2	1.2	42.4	42.4	2.0	1 1/2"	38.1	1.2
DN25	28x1.0	29x1.5	30x2.0	28x1.5	25.4	25.4	1.2	1.6	48.3	48.3	2.0	2"	50.8	1.5
DN32	34x1.0	35x1.5	36x2.0	34x1.5	38.1	38.1	1.2	1.6	60.3	60.3	2.0	2.5"	63.5	2.0
DN40	40x1.0	41x1.5	42x2.0	40x1.5	50.8	50.8	1.2	1.6	76.2	76.2	2.0	3"	76.2	2.0
DN50	52x1.0	53x1.5	54x2.0	52x1.5	63.5	63.5	1.6	1.6	88.9	88.9	2.0	3 1/2"	89	2.0
DN65	70x2.0	70x2.0	70x2.0	70x2.0	76.2	76.2	1.6	1.6	114.3	114.3	2.0	4"	101.6	2.0
DN80	85x2.0	85x2.0	85x2.0	85x2.0	101.6	101.6	2.0	2.0	139.7	139.7	2.0			
DN100	104x2.0	104x2.0	104x2.0	104x2.0	114.3	114.3	2.0	2.0	168.3	168.3	3.6			
DN125	129x2.0	129x2.0	129x2.0	129x2.0	139.7	139.7	2.0	2.0	219.1	219.1	3.6			
DN150	154x2.0	154x2.0	154x2.0	154x2.0	168.3	168.3	2.6	2.6						
DN200	204x2.0	204x2.0	204x2.0	204x2.0	219.1	219.1	2.6	2.6						
	Series1 系列1	Series2 系列2	Series3 系列3	Recommended Series 推荐系列										





CHINA DONJOY TECHNOLOGY CO.,LTD.

DONJOY looking forward to your visit! Your telecommunications!



中国·东正 科技有限公司

温州空港新区：
温州通海大道港富路25号
总机：0577-86990888
传真：0577-86998000

Wenzhou airport Area:
No.25 Gangfu Road,Tonghai Avenue,
wenzhou
Tel: +86-577-86990888
Fax: +86-577-86998000
E-mail: donjoy@cndonjoy.com

www.cndonjoy.com

法律声明：

目录样册版本属东正所有，如有抄袭东正将追究其法律责任和经济赔偿。东正已获得国家版权局书刊号。东正众多技术设计，都具有专利保护，如有抄袭，东正必将追究法律责任和经济赔偿。